



Gavin School District 37

Student/Parent Handbook

**Gavin Central Elementary School
(Grades Preschool-4)**

**Gavin South Middle School
(Grades 5-8)**

2025-2026 School Year
Revised 06/16/2025

We engage, grow and empower every learner, every day.

Gavin School District #37 Student and Parent/Guardian Handbook

TABLE OF CONTENTS

INTRODUCTORY INFORMATION & GENERAL NOTICES	6-17
School Operations During a Pandemic or Other Health Emergency (Updated: May 2021)	
Enrollment & Residency	
Registration and Residency Verification	
Visitors	
Equal Opportunity and Sex Equity	
Animals on School Property	
School Volunteers	
Invitations & Gifts	
Treats & Snacks (K-8)	
Emergency School Closings	
Video & Audio Monitoring Systems	
Accommodating Individuals with Disabilities	
Students with Food Allergies	
Care of Students with Diabetes	
Suicide and Depression Awareness and Prevention	
Parent Organizations and Booster Clubs	
Awareness and Prevention of Child Sexual Abuse, Grooming Behaviors, and Boundary Violations	
Employee Conduct Standards (Faith's Law)	
Prevention of Anaphylaxis	
 ATTENDANCE, PROMOTION & GRADUATION	 17-22
Attendance	
Student Absences	
Illnesses	
Release Time for Religious Instruction and Observance	
Make-Up Work	
Truancy	
Tardies	
Students Being Picked Up from School	
Grading & Promotion	
Homework	
Exemption from PE Requirement	
Accelerated Placement	
Home & Hospital Instruction	
 STUDENT FEES & SCHOOL LUNCH PROGRAM	 23
Fines, Fees, and Charges; Waiver of Student Fees	
Breakfast and Lunch Program	
Vandalism	
 TRANSPORTATION	 23-25
Bus Transportation	
Bus Conduct	

HEALTH & SAFETY	25-31
Required Health Examinations and Immunization	
Student Medication	
Guidance & Counseling	
Safety Drill Procedures and Conduct	
Communicable Disease	
Head Lice	
Targeted School Violence Prevention Program	
Targeted School Violence Prevention and Threat Assessment Education	
DISCIPLINE & CONDUCT	31-45
General Building Conduct	
Student Appearance	
Student Behavior	
Prevention of and Response to Bullying, Intimidation, and Harassment	
Harassment & Teen Dating Violence Prohibited	
Cafeteria Rules	
Field Trips	
Student Use of Electronic Devices	
INTERNET, TECHNOLOGY & PUBLICATIONS	45-51
Acceptable Use of the District's Electronic Networks	
Guidelines of Student Distribution of Non-School Publications	
Access to Non-School Sponsored Publications	
Annual Notice to Parents about Educational Technology Vendors Under SOPPA	
Use of Artificial Intelligence	
SEARCH AND SEIZURE	52-53
Search and Seizure	
EXTRACURRICULAR AND ATHLETIC- ACTIVITIES	53-54
Extracurricular Athletic Activities Code of Conduct	
Attendance at School-Sponsored Dances	
Student Athlete Concussions and Head Injuries	
SPECIAL EDUCATION	55-57
Education of Children with Disabilities	
Discipline of Students with Disabilities	
Exemption from Physical Education Requirement	
Request to Access Classroom for Personnel or Special Education Evaluation or Observation	
Related Service Logs	
PUNS (Prioritization of Urgency of Need for Services) Database Information for Students and Parents or Guardians	
STUDENT RECORDS & PRIVACY	57-62
Student Privacy Protections	
Instructional Material	
Student Records	
Student Biometric Information	

PARENTAL RIGHT NOTIFICATIONS	62-66
Standardized Testing	
Homeless Child’s Right to Education	
Family Life & Sex Education Instruction	
Multilingual Learners	
School Visitation Rights	
Pesticide Application Notice	
Mandated Reporters	
Unsafe School Choice Option	
Student Privacy	
Sex Offender Notification Law	
Parent Notices Required by the Every Student Succeeds Act (ESSA)	
1:1 LEARNING ENVIRONMENT	66-69
Introduction	
Device Distribution & Collection	
Using the Device at School	
Using the Device Outside of School	
Device Identification	
No Expectation of Privacy	
Repairs/Replacement	
Content Filter	
Google Workspace for Education Notice to Parents/Guardians	
Digital Citizenship	
Apps, Websites & Other Tools	
2025-2026 Student & Parent/Guardian Handbook Acknowledgment	70
Access To Electronic Network Authorization Form	71
Permission For Student To Walk Or Ride Bicycle To School in Lieu of District-Provided Bus Transportation	72-73

INTRODUCTORY INFORMATION & GENERAL NOTICES

Visit our Website at www.gavin37.org
for up-to-date information on Gavin Schools.

SCHOOL HOURS

Gavin Central Elementary School (Grades K thru 4)
8:30 A.M. - 3:00 P.M.
Preschool; A.M. from 8:30 -11:00; P.M. from 12:00 – 2:30
School Office Telephone Number: 847-973-3280
7:30 A.M. – 4:00 P.M.

Gavin South Middle School (Grades 5-8)
7:50 A.M. – 2:20 P.M.
School Office Telephone Number: 847-546-9336
7:00 A.M. – 4:00 P.M.

Half-Day School Improvement Days
8/20, 9/17, 10/22, 11/12, 1/28, 3/11, 4/15, 5/13
10:50 A.M. South Dismissal, 11:30 A.M. Central Dismissal

Supervision is not available for:

- South students prior to 7:40 A.M.
- Central students prior to 8:20 A.M.

Please do not bring students to school before those times unless instructed.

We do not have supervision for them.

Breakfast times for Gavin South are 7:40 A.M. until 7:50 A.M.
Breakfast times for Gavin Central are 8:20 A.M until 8:30 A.M.

BREAKFAST AND LUNCH

Gavin participates in the Community Eligibility Provision (CEP) program where school meals are available to all students at no cost to families. Only extra food items/snacks need to be purchased. We are presently being served by our own in-house food service staff.

NOTICE: The provisions of this student handbook contain only a summary of the Board of Education Policies cited throughout. The complete policies are accessible through the District's website, www.gavin37.org. The provisions of this handbook are subject to change during the school year without notice.

Gavin School District #37

This handbook is a summary of the school's rules and expectations, and is not a comprehensive statement of school procedures. The Board's comprehensive policy manual is available for public inspection through the District's website (www.gavin37.org) or at the District office, located at:

Gavin School District #37
25775 W IL Route 134
Ingleside, IL 60041
(847) 546-2916

The School Board governs the school district, and is elected by the community. Current School Board members are:

James Miller III, President
Amber Sederstrom, Vice-President
Sarah Brezinski, Secretary
Brandy Barth, Member
Kristin Bloniarczyk, Member
Jennifer Meyer, Member
Lauren Perez, Member

The School Board has hired the following administrative staff to operate the school:

Scott Schwartz, Superintendent
Diana Miletich Wester, Executive Director of Business Services
Meagan Dwyer, Director of Student Services
Jason Jurgaitis, Middle School Principal
Carol Bennett, Elementary School Principal
Steve Copeland, Middle School Assistant-Principal
Mary Orozco, Elementary School Assistant-Principal
Meagan Dwyer, Title IX Coordinator
Jason Jurgaitis, Title IX Coordinator
Mike Gigiano, Athletic Director
Clay Kovac, Athletic Director

The schools are located at:

Gavin Central Elementary
36414 N Ridge Ave
Ingleside, IL 60041
Phone: (847) 973-3280
FAX: (847) 496-8922

Gavin South Middle School
25775 W IL Route 134
Ingleside, IL 60041
Phone: (847) 546-9336
FAX: (847) 496-8703

SCHOOL OPERATIONS DURING A PANDEMIC OR OTHER HEALTH EMERGENCY

A pandemic is a global outbreak of disease. Pandemics happen when a new virus emerges to infect individuals and, because there is little to no pre-existing immunity against the new virus, it spreads sustainably. Your child's school and district play an essential role, along with the local health department and emergency management agencies, in protecting the public's health and safety during a pandemic or other health emergency.

During a pandemic or other health emergency, you will be notified in a timely manner of all changes to the school environment and schedule that impact your child. Please be assured that even if school is not physically in session, it is the goal of the school and district to provide your child with the best educational opportunities possible.

Additionally, please note the following:

1. All decisions regarding changes to the school environment and schedule, including a possible interruption of in-person learning, will be made by the superintendent in consultation with and, if necessary, at the direction of the Governor, Illinois Department of Public Health, local health department, emergency management agencies, and/or Regional Office of Education.
2. Available learning opportunities may include remote and/or blended learning. Blended learning may require your child to attend school on a modified schedule.
3. Students will be expected to participate in blended and remote instruction as required by the school and district. Parents are responsible for assuring the participation of their child. Students who do not participate in blended or remote learning will be considered truant.
4. All school disciplinary rules remain in effect during the interruption of in-person learning. Students are subject to discipline for disrupting the remote learning environment to the same extent that discipline would be imposed for disruption of the traditional classroom.
5. Students and parents will be required to observe all public health and safety measures implemented by the school and district in conjunction with state and local requirements.
6. During a pandemic or other health emergency, the school and district will ensure that educational opportunities are available to all students.
7. School personnel will work closely with students with disabilities and other vulnerable student populations to minimize the impact of any educational disruption.
8. Students who have a compromised immune system, live with an individual with a compromised immune system, or have a medical condition that may impact their ability to attend school during a pandemic or other public health emergency should contact school officials.
9. During a pandemic or other health emergency, teachers and school staff will receive additional training on health and safety measures.

10. In accordance with school district or state mandates, the school may need to conduct a daily health assessment of your child. Parents and students will be notified of the exact assessment procedures if this becomes necessary.
11. Parents should not send their child to school if their child exhibits any symptoms consistent with the pandemic or other health emergency.
12. Please do not hesitate to contact school or district officials if you have any concerns regarding your child's education, health or safety.

Enrollment

Parents/guardians who enroll a student within the District must provide either (1) a certified copy of the student's valid birth certificate or (2) other reliable proof (i.e., passport, visa or other government document) of the child's identity and age and an affidavit explaining the inability to produce a copy of the birth certificate within 30 days of the student's enrollment. The District will provide assistance to homeless students who have difficulty producing a certified copy. If a certified copy is not received within 30 days, state law requires the District to report this to the Illinois State Police.

Residency

Only students who are residents of the District may attend a District school except as otherwise provided in State law. A student's residence is the same as the person who has legal custody of the student. A person asserting legal custody over a student, who is not the child's natural or adoptive parent, shall complete a signed statement, stating:

1. That he or she has assumed and exercises the legal responsibility of the child,
2. The reason the child lives with him or her, other than to receive an education in the District, and
3. That he or she exercises full control over the child regarding daily educational and medical decisions in case of emergency.

If the District knows the current address of the child's natural or adoptive parent, the District shall request in writing that the person complete a signed statement or Power of Attorney stating:

1. the role and responsibility of the person with whom their child is living, and
2. that the person with whom the child is living has full control over the child regarding daily educational and medical decisions in case of emergency.

A student whose family moves out of the District during the school year will be permitted to attend school for the remainder of the year without payment of tuition.

When a student's change of residence is due to the military service obligation of the student's legal custodian, the student's residence is deemed to be unchanged for the duration of the custodian's military service obligation if the student's custodian makes a written request. The District, however, is not responsible for the student's transportation to or from school.

If, at the time of enrollment, a dependent child of military personnel is housed in temporary housing located outside of the District, but will be living within the District within 60 days after the time of initial enrollment, the child is allowed to enroll, subject to the requirements of State law, and must not be charged tuition.

Registration and Residency Verification

Gavin School District 37 uses CLEAR, a secure third-party service, to electronically verify student addresses. This system is used by many school districts throughout Lake County.

For most families, **no additional paperwork** is needed—residency will be automatically confirmed through CLEAR, making the registration process faster and easier.

If we are **unable to verify your residency electronically**, we will contact you and ask you to provide documentation to confirm your address.

This process helps ensure that district resources are used to support students **who live within our boundaries**.

Visitors

All visitors, including parents and siblings, are required to enter through the front door of the building and proceed immediately to the main office. Visitors should identify themselves and inform office personnel of their reason for being at school.

Visitors must sign in, identifying their name, the date and time of arrival, and the classroom or location they are visiting. Approved visitors must take a tag identifying themselves as a guest and place the tag on their outer clothing in a clearly visible location. Visitors are required to proceed immediately to their location in a quiet manner. All visitors must return to the main office and sign out before leaving the school.

Any person wishing to confer with a staff member should contact that staff member to make an appointment. Conferences with teachers are held, to the extent possible, outside school hours or during the teacher's conference/preparation period.

Visitors are expected to abide by all school rules during their time on school property. A visitor who fails to conduct himself or herself in a manner that is appropriate will be asked to leave and may be subject to criminal penalties for trespassing and/or disruptive behavior.

No person on school property or at a school event shall perform any of the following acts:

1. Strike, injure, threaten, harass, or intimidate a staff member, board member, sports official or coach, or any other person.
2. Behave in an unsportsmanlike manner or use vulgar or obscene language.
3. Unless specifically permitted by State law, possess a weapon, any object that can reasonably be considered a weapon or looks like a weapon, or any dangerous device.
4. Damage or threaten to damage another's property.
5. Damage or deface school property.
6. Violate any Illinois law or municipal, local, or county ordinance.
7. Smoke or otherwise use tobacco products.
8. Distribute, consume, use, possess, or be impaired by or under the influence of an alcoholic beverage, cannabis, other lawful product, or illegal drug.
9. Be present when the person's alcoholic beverage, cannabis, other lawful product, or illegal drug consumption is detectable, regardless of when and/or where the use occurred.
10. Use or possess medical cannabis, unless he or she has complied with Illinois' Compassionate

Use of Medical Cannabis Act and District policies.

11. Impede, delay, disrupt, or otherwise interfere with any school activity or function (including using cellular phones in a disruptive manner).
12. Enter upon any portion of school premises at any time for purposes other than those that are lawful and authorized by the board.
13. Operate a motor vehicle: (a) in a risky manner, (b) in excess of 20 miles per hour, or (c) in violation of an authorized district employee's directive.
14. Engage in any risky behavior, including rollerblading, roller-skating, or skateboarding.
15. Violate other district policies or regulations, or a directive from an authorized security officer or district employee.
16. Engage in any conduct that interferes with, disrupts, or adversely affects the district or a school function.

Any person who engages in prohibited conduct may be ejected from or denied admission to school property in accordance with State law. The person may also be subject to being denied admission to school athletic or extracurricular events for up to one calendar year.

Equal Opportunity and Sex Equity

Equal educational and extracurricular opportunities are available to all students without regard to race, color, nationality, sex, sexual orientation, gender identity, ancestry, age, religion, physical or mental disability, status as homeless, immigration status, order of protection status, military status, unfavorable military discharge, reproductive health decisions, or actual or potential marital or parental status, including pregnancy.

No student shall, based on sex, sexual orientation, or gender identity be denied equal access to programs, activities, services, or benefits or be limited in the exercise of any right, privilege, advantage, or denied equal access to educational and extracurricular programs and activities.

Any student or parent/guardian with a sex equity or equal opportunity concern should contact Jason Jurgaitis (jjurgaitis@gavin37.org) or Meagan Dwyer (mdwyer@gavin37.org)

Any student may file a sex discrimination complaint under the District's Title IX Grievance Procedure.

Any student may file a sex equity complaint under the District's Uniform Grievance Procedure. A student may appeal the Board's decision to the Regional Superintendent and, thereafter, to the State Superintendent of Education.

Animals on School Property

In order to assure student health and safety, animals are not allowed on school property, except in the case of a service animal accompanying a student or other individual with a documented disability. This rule may be temporarily waived by the building principal in the case of an educational opportunity for students, provided that

- (a) the animal is appropriately housed, humanely cared for, and properly handled, and
- (b) students will not be exposed to a dangerous animal or an unhealthy environment.

School Volunteers

Some teachers utilize parent volunteers in the classroom. The individual teachers make this decision. Teachers who desire parent volunteers will notify parents. For school-wide volunteer opportunities, please contact the building principal.

Volunteers are required to check in and out at the main office and receive a visitor badge before going to their destination.

Invitations & Gifts

At the elementary level, party invitations or gifts for classmates should not be brought to school to be distributed unless they are distributed to all students in the class.

Treats & Snacks (K-8)

Due to health concerns and scheduling, treats and snacks for any occasion must be arranged in advance with the classroom teacher. All treats and snacks must be store bought and prepackaged in individual servings. No homemade treats or snacks are allowed at school. Treats and snacks may not require refrigeration and must have a clearly printed list of ingredients on the packaging. We strongly encourage you to select a treat or snack with nutritional value.

Emergency School Closings

In the event of a weather-related or emergency closing or schedule change, the District sends an email, phone call, and text message to staff and families. All families must make sure their contact information is up to date in Family Access. The District will also post the announcement on the District home page (www.gavin37.org) and District social media accounts.

The Superintendent will make every effort by 5:30 a.m. to make the decision to open on time, open with a delayed start or close schools; however, there may be times when the decision must be made later.

If bad weather or other emergency occurs during the day, please look for an email, text message or phone call and check the District home page (www.gavin37.org) for possible early dismissal information. For your child's safety, make certain your child knows ahead of time where to go in case of an early dismissal. If we dismiss early for an emergency, all after-school functions are automatically canceled.

In the case of a delayed start, all bus pick-up and arrival times will be two hours late. In a delayed start plan, there will be no morning preschool; afternoon preschool classes will run as normal.

When schools remain open during inclement weather, ***the final decision to keep a child home is the responsibility of each child's parents.*** If you keep your child home, report the absence due to weather; the absence will be excused.

Video & Audio Monitoring Systems

A video and/or audio monitoring system may be in use on school buses and a video monitoring system may be in use in public areas of the school building. These systems have been put in place to protect students, staff, visitors and school property. If a discipline problem is captured on audiotape or videotape, these recordings may be used as the basis for imposing student discipline. If criminal actions are recorded, a copy of the tape may be provided to law enforcement personnel.

Accommodating Individuals with Disabilities

Individuals with disabilities will be provided an opportunity to participate in all school-sponsored services, programs, or activities. Individuals with disabilities should notify the superintendent or building principal if they have a disability that will require special assistance or services and, if so,

what services are required. This notification should occur as far in advance as possible of the school-sponsored function, program, or meeting.

Students with Food Allergies

State law requires our school district to annually inform parents of students with life-threatening allergies or life-threatening chronic illnesses of the applicable provisions of Section 504 of the Rehabilitation Act of 1973 and other applicable federal statutes, state statutes, federal regulations and state rules.

If your student has a life-threatening allergy or life-threatening chronic illness, please notify the building principal or assistant principal.

Federal law protects students from discrimination due to a disability that substantially limits a major life activity. If your student has a qualifying disability, an individualized Section 504 Plan will be developed and implemented to provide the needed support so that your student can access his or her education as effectively as students without disabilities.

Not all students with life-threatening allergies and life-threatening chronic illnesses may be eligible under Section 504. Our school district also may be able to appropriately meet a student's needs through other means.

Care of Students with Diabetes

If your child has diabetes and requires assistance with managing this condition while at school and school functions, a Diabetes Care Plan must be submitted to the building principal. Parents/guardians are responsible for and must:

- a. Inform the school in a timely manner of any change which needs to be made to the Diabetes Care Plan on file with the school for their child.
- b. Inform the school in a timely manner of any changes to their emergency contact numbers or contact numbers of health care providers.
- c. Sign the Diabetes Care Plan.
- d. Grant consent for and authorize designated School District representatives to communicate directly with the health care provider whose instructions are included in the Diabetes Care Plan.

For further information, please contact the building principal.

Suicide and Depression Awareness and Prevention

Youth suicide impacts the safety of the school environment. It also affects the school community, diminishing the ability of surviving students to learn and the school's ability to educate. Suicide and depression awareness and prevention are important goals of the school district.

The school district maintains student and parent resources on suicide and depression awareness and prevention. Much of this information, including a copy of the District's policy ([Policy 7:290](#)), is posted on the District website (gavin37.org).

If a student is in need of support, additional resources are available:

- Dial 988 for the national Suicide and Crisis Lifeline
- Text HOME to 741741 to reach the Crisis Text Line

- Text SAFE2 (72332) for Safe2Help Illinois

Parent Organizations and Booster Clubs

Parent organizations and booster clubs are invaluable resources to the District's schools. While parent organizations and booster clubs have no administrative authority and cannot determine District policy, the School Board welcomes their suggestions and assistance.

Parent organizations and booster clubs may be recognized by the Board and permitted to use the District's name, a District school's name, or a District school's team name, or any logo attributable to the District provided they first receive the Superintendent or designee's express written consent. Consent to use one of the above-mentioned names or logos will generally be granted if the organization or club has by-laws containing the following:

1. The organization's or club's name and purpose, such as, to enhance students' educational experiences, to help meet educational needs of students, to provide extra athletic benefits to students, to assist specific sports teams or academic clubs through financial support, or to enrich extracurricular activities.
2. The rules and procedures under which it operates.
3. An agreement to adhere to all Board policies and administrative procedures.
4. A statement that membership is open and unrestricted, meaning that membership is open to all parents/guardians of students enrolled in the school, District staff, and community members.
5. A statement that the District is not, and will not be, responsible for the organization's or club's business or the conduct of its members, including on any organization or club websites or social media accounts.
6. An agreement to maintain and protect its own finances.
7. A recognition that money given to a school cannot be earmarked for any particular expense. Booster clubs may make recommendations, but cash or other valuable consideration must be given to the District to use at its discretion. The Board's legal obligation to comply with Title IX by providing equal athletic opportunity for members of both genders will supersede an organization or club's recommendation.

Permission to use one of the above-mentioned names or logos may be rescinded at any time and does not constitute permission to act as the District's representative. At no time does the District accept responsibility for the actions of any parent organization or booster club regardless of whether it was recognized and/or permitted to use any of the above-mentioned names or logos. The Superintendent shall designate an administrative staff member to serve as the recognized liaison to parent organizations or booster clubs. The liaison will serve as a resource person and provide information about school programs, resources, policies, problems, concerns, and emerging issues. Building staff will be encouraged to participate in the organizations.

Awareness and Prevention of Child Sexual Abuse, Grooming Behaviors, and Boundary Violations

Child sexual abuse, grooming behaviors, and boundary violations harm students, their parent/guardian, the District's environment, its school communities, and the community at large, while diminishing a student's ability to learn.

Warning Signs of Child Sexual Abuse

Warning signs of child sexual abuse include the following:

Physical signs:

- Sexually transmitted infections (STIs) or other genital infections
- Signs of trauma to the genital area, such as unexplained bleeding, bruising, or blood on the sheets, underwear, or other clothing
- Unusual weight gain or loss

Behavioral signs:

- Excessive talk about or knowledge of sexual topics
- Keeping secrets
- Not talking as much as usual
- Not wanting to be left alone with certain people or being afraid to be away from primary caregivers
- Regressive behaviors or resuming behaviors that the child had grown out of, such as thumb sucking or bedwetting
- Overly compliant behavior
- Sexual behavior that is inappropriate for the child's age
- Spending an unusual amount of time alone
- Trying to avoid removing clothing to change or bathe

Emotional signs:

- Change in eating habits or unhealthy eating patterns, like loss of appetite or excessive eating
- Signs of depression, such as persistent sadness, lack of energy, changes in sleep or appetite, withdrawing from normal activities, or feeling "down"
- Change in mood or personality, such as increased aggression
- Decrease in confidence or self-image
- Anxiety, excessive worry, or fearfulness
- Increase in unexplained health problems such as stomach aches and headaches
- Loss or decrease in interest in school, activities, and friends
- Nightmares or fear of being alone at night
- Self-harming behaviors or expressing thoughts of suicide or suicidal behavior
- Failing grades
- Drug or alcohol use

Warning Signs of Grooming Behaviors

School and District employees are expected to maintain professional and appropriate relationships with students based upon students' ages, grade levels, and developmental levels.

Prohibited grooming is defined as

1. any act, including but not limited to, any verbal, nonverbal, written, or electronic communication or physical activity,
2. by an employee with direct contact with a student,
3. that is directed toward or with a student to establish a romantic or sexual relationship with the student. Examples of grooming behaviors include, but are not limited to, the following behaviors:
 - Sexual or romantic invitations to a student
 - Dating or soliciting a date from a student
 - Engaging in sexualized or romantic dialog with a student
 - Making sexually suggestive comments that are directed toward or with a student

- Self-disclosure or physical exposure of a sexual, romantic, or erotic nature
- Sexual, indecent, romantic, or erotic contact with a student
- Failing to respect boundaries or listening when a student says “no”
- Engaging in touching that a student or student’s parents/guardians have indicated is unwanted
- Trying to be a student’s friend rather than filling an adult role in the student’s life
- Failing to maintain age-appropriate relationships with students
- Talking with students about personal problems or relationships
- Spending time alone with a student outside of their role in the student’s life or making up excuses to be alone with a student
- Expressing unusual interest in a student’s sexual development, such as commenting on sexual characteristics or sexualizing normal behaviors
- Giving a student gifts without occasion or reason
- Spending a lot of time with a student
- Restricting a student’s access to other adults

Warning Signs of Boundary Violations

School and District employees breach employee-student boundaries when they misuse their position of power over a student in a way that compromises the student’s health, safety, or general welfare. Examples of boundary violations include:

- Favoring a certain student by inviting the student to “hang out” or by granting special privileges
- Engaging in peer-like behavior with a student
- Discussing personal issues with a student
- Meeting with a student off-campus without parent/guardian knowledge and/or permission
- Dating, requesting, or participating in a private meeting with a student (in person or virtually) outside of a professional role
- Transporting a student in a school or private vehicle without administrative authorization
- Giving gifts, money, or treats to an individual student
- Sending a student on personal errands
- Intervening in a serious student problem instead of referring the student to an appropriately trained professional
- Sexual or romantic invitations toward or from a student
- Taking and using photos/videos of students for non-educational purposes
- Initiating or extending contact with a student beyond the school day in a one-on-one or non-group setting
- Inviting a student to an employee’s home
- Adding a student on personal social networking sites as contacts when unrelated to a legitimate educational purpose
- Privately messaging a student
- Maintaining intense eye contact with a student
- Making comments about a student’s physical attributes, including excessively flattering comments
- Engaging in sexualized or romantic dialog
- Making sexually suggestive comments directed toward or with a student
- Disclosing confidential information
- Self-disclosure of a sexual, romantic, or erotic nature
- Full frontal hugs

- Invading personal space

If you believe you are a victim of child sexual abuse, grooming behaviors, or boundary violations, or you believe that your child is a victim, you should immediately contact the building principal, a school counselor, or another trusted adult employee of the School.

Additional Resources include:

- National Sexual Assault Hotline at 800.656.HOPE (4673)
- National Sexual Abuse Chatline at online.rainn.org
- Illinois Department of Children and Family Services Hotline at 1.800.25.ABUSE (2873)

Sexual Abuse Response and Prevention Resource Guide

The Illinois State Board of Education (ISBE) maintains a resource guide on sexual abuse response and prevention. The guide contains information on and the location of children's advocacy centers, organizations that provide medical evaluations and treatment to victims of child sexual abuse, organizations that provide mental health evaluations and services to victims and families of victims of child sexual abuse, and organizations that offer legal assistance to and provide advocacy on behalf of victims of child sexual abuse. This guide can be accessed through the ISBE website at www.isbe.net or you may request a copy of this guide by contacting the school's office.

Employee Conduct Standards (Faith's Law)

School districts are required to include in their student handbook the District's Employee Code of Professional Conduct. These standards, in part, define appropriate conduct between school employees and students. A copy of these standards can be found on the District's website or requested from the Superintendent's office.

Prevention of Anaphylaxis

While it is not possible for the School or District to completely eliminate the risks of an anaphylactic emergency, the District maintains a comprehensive policy on anaphylaxis prevention, response, and management in order to reduce these risks and provide accommodations and proper treatment for anaphylactic reactions. Parent(s)/guardian(s) and students who desire more information or who want a copy of the District's policy may contact the Building Principal.

ATTENDANCE, PROMOTION & GRADUATION

Attendance

Illinois law requires that whoever has custody or control of any child between six (by September 1st) and seventeen years of age shall assure that the child attends school in the District in which he or she resides, during the entire time school is in session (unless the child has already graduated from high school). Illinois law also requires that whoever has custody or control of a child who is enrolled in the school, regardless of the child's age, shall assure that the child attends school during the entire time school is in session.

Student Absences

Subject to specific requirements in State law, the following children are not required to attend public school:

- (1) any child attending a private school (including a home school) or parochial school,
- (2) any child who is physically or mentally unable to attend school (including a pregnant student suffering medical complications as certified by her physician),
- (3) any child lawfully and necessarily employed,

- (4) any child over 12 and under 14 years of age while in confirmation classes,
- (5) any child absent because of religious reasons, including to observe a religious holiday, for religious instruction, or because his or her religion forbids secular activity on a particular day(s) or time of day, and
- (6) any child 16 years of age or older who is employed and is enrolled in a graduation incentives program.

For students who are required to attend school there are two types of absences: excused and unexcused. Excused absences include: illness (including up to 5 days per school year for mental or behavioral health of the student), attendance at a verified medical or therapeutic appointment (including a victim services provider), observance of a religious holiday or event, death in the immediate family, family emergency, situations beyond the control of the student as determined by the school board, circumstances that cause reasonable concern to the parent/guardian for the student's mental, emotional or physical health or safety, attending a military honors funeral to sound TAPS, attend a civic event, or other reason as approved by the building principal. For students who are parents, expectant parents, or victims of domestic or sexual violence, an excused absence includes the fulfillment of a parenting responsibility and addressing circumstances resulting from domestic or sexual violence. Students eligible to vote are also excused for up to two hours to vote in a primary, special, or general election.

Additionally, a student will be excused for up to 5 days in cases where the student's parent/guardian is an active-duty member of the uniformed services and has been called to duty for, is on leave from, or has immediately returned from deployment to a combat zone or combat-support postings. The Board of Education, in its discretion, may excuse a student for additional days relative to such leave or deployment. A student and the student's parent/guardian are responsible for obtaining assignments from the student's teachers prior to any excused absences and for ensuring that such assignments are completed by the student prior to his or her return to school.

Illnesses

Please keep your child home if: they have a fever, vomiting, diarrhea or unexplained rash the night before school.

- **FEVER**- a fever is defined as 100°F . Children must be fever free for a full 24 hours, without the aid of medication before returning to school.
- **VOMITING**- children must be without vomiting for a full 24 hours, without the aid of medication before returning to school.
- **DIARRHEA**- children must be diarrhea free for a full 24 hours, without the aid of medication before returning to school.

Students who are excused from school will be given a reasonable timeframe to make up missed homework and classwork assignments.

All other absences may be considered unexcused. Pre-arranged excused absences must be approved by the building principal.

The school may require documentation explaining the reason for the student's absence.

In the event of any absence, the student's parent/guardian is required to call the school before 8:00 a.m. to explain the reason for the absence. If a call has not been made to the school by 9:00 a.m. on the day of a student's absence, a school official will call the home to inquire why the student is not at school. If the parent/guardian cannot be contacted, the student will be required to submit a signed note

from the parent/guardian explaining the reason for the absence. Failure to do so shall result in an unexcused absence. Upon request of the parent/guardian, the reason for an absence will be kept confidential.

Diagnostic Procedures for Identifying Student Absences and Support Services to Truant or Chronically Truant Students

State law requires every school district to collect and review its chronic absence data and determine what systems of support and resources are needed to engage chronically absent students and their families to encourage the habit of daily attendance and promote success. This review must include an analysis of chronic absence data from each attendance center.

Furthermore, State law provides that school districts are encouraged to provide a system of support to students who are at risk of reaching or exceeding chronic absence levels with strategies and are also encouraged to make resources available to families such as those available through the State Board of Education's Family Engagement Framework to support and engage students and their families to encourage heightened school engagement and improved daily school attendance.

"Chronic absence" means absences that total 10% or more of school days of the most recent academic school year, including absences with and without valid cause, and out-of-school suspensions.

The School and District use the following diagnostic procedures for identifying the causes of unexcused student absences: Interviews with the student, his or her parent/guardian and any school officials who may have information about the reasons for the student's attendance problems.

Supportive services to truant or chronically truant students include: parent conferences, student counseling, family counseling, and information about existing community services.

Release Time for Religious Instruction/Observance

A student will be released from school, as an excused absence, to observe a religious holiday or for religious instruction. The student's parent/guardian must give written notice to the building principal at least 5 calendar days before the student's anticipated absence(s).

Students excused for religious reasons will be given an opportunity to make up all missed work, including homework and tests, for equivalent academic credit.

Make-Up Work

If a student's absence is excused or if a student is suspended from school, he/she will be permitted to make up all missed work, including homework and tests, for equivalent academic credit. Students who are unexcused from school will not be allowed to make up missed work.

Truancy

Student attendance is critical to the learning process. Truancy is therefore a serious issue and will be dealt with in a serious manner by the school and district. Students who miss more than 1% but less than 5% of the prior 174 regular school days without valid cause (a recognized excuse) are truant. Students who miss 5% or more of the prior 174 regular school days without valid cause are chronic truants. Students who are chronic truants will be offered support services and resources aimed at correcting the truancy issue.

If chronic truancy persists after support services and other resources are made available, the school and district will take further action, including:

- Referral to the truancy officer
- Reporting to officials under the Juvenile Court Act
- Referral to the State's Attorney
- Appropriate school discipline

A student who misses 15 consecutive days of school without valid cause and who cannot be located or, after exhausting all available support services, cannot be compelled to return to school is subject to expulsion from school.

A parent or guardian who knowingly and willfully permits a child to be truant is in violation of State law.

Tardies

Students are expected to arrive on time for school and for their classes. If a student arrives late for school, the parent or guardian and the student must report to the school office to sign in the student. **Students who are chronically tardy (3 or more days per trimester) may be subject to disciplinary action and their parents will be notified.**

Students Being Picked Up From School

We encourage parents to arrange appointments so that students do not have to miss school. On those occasions when it is necessary to pick up students early, a note must have been sent with their child. **Parents must report to the office to sign the student out of the building.**

If you are picking up your child from Central at the regular dismissal time, **pull forward to the front circle and a staff member will assist in getting the child to the car.** Unless an emergency, it is required that you send a note or call the office before 11:00 A.M.

At South, pickups will wait inside the building until the buses have left the loading area. Once the buses have left, parents may pick up their students when they are dismissed. Students who walk or ride their bikes must provide written parent consent to the Principal.

Grading & Promotion

For Students in grades K-8, there are three, 12-week grading periods. Report cards are issued in November, March, and on the last day of school. **Gavin South sends home report cards electronically, but will issue hard copies upon request.**

Progress reports are posted online through [Family Access](#). For questions regarding grades, please contact the classroom teacher. The decision to promote a student to the next grade level is based on successful completion of the curriculum, attendance, performance on standardized assessments and other assessments. A student will not be promoted based upon age or any other social reasons not related to academic performance.

Homework

Homework is used as a way for students to practice what they have learned in the classroom. The time requirements and the frequency of homework will vary depending on a student's teacher, ability and grade level.

After the child has been absent for two or more days assignments will be available for the parent to pick up if requested by the parent. Excessive missing assignments may result in parent teacher

conference, behavior report, or retention. Students have one day to complete assignments for each day missed due to absence for illness or family emergency. The teacher may not be able to get the assignments ready on the first day the student is absent. Please make requests for homework prior to 10:00 A.M. Missing assignments will not make up for educational instructional time lost due to absence. Since vacations are considered unexcused absences, teachers will not provide assignments ahead of time. Work will be given upon student's return or the academic team may provide a vacation packet or alternative assignment to be turned in upon return from the vacation trip.

Exemption from Physical Education Requirement

In order to be excused from participation in physical education, a student must present an appropriate excuse from his or her parent/guardian or from a person licensed under the Medical Practice Act. The excuse may be based on medical or religious prohibitions. An excuse because of medical reasons must include a signed statement from a person licensed under the Medical Practice Act that corroborates the medical reason for the request. An excuse based on religious reasons must include a signed statement from a member of the clergy that corroborates the religious reason for the request.

A student in grades 7-8 may submit a written request to the building principal requesting to be excused from physical education courses because of the student's ongoing participation in an interscholastic or extracurricular athletic program. The building principal will evaluate requests on a case-by-case basis.

Students with an Individualized Education Program may also be excused from physical education courses for reasons stated in the Special Education section of the handbook.

Special activities in physical education will be provided for a student whose physical or emotional condition, as determined by a person licensed under the Medical Practices Act, prevents his or her participation in the physical education course.

State law prohibits the School District from honoring parental excuses based upon a student's participation in athletic training, activities, or competitions conducted outside the auspices of the School District.

Students who have been excused from physical education shall return to the course as soon as practical. The following considerations will be used to determine when a student shall return to a physical education course:

1. The time of year when the student's participation ceases; and
2. The student's class schedule.

Accelerated Placement

The District provides for an Accelerated Placement Program (APP) for qualified students. It provides students with an educational setting with curriculum options that are usually reserved for students who are older or in higher grades than the student. Accelerated placement includes but may not be limited to:

- early entrance to kindergarten or first grade,
- accelerating a student in a single subject and
- grade acceleration.

Participation is open to all students who demonstrate high ability and who may benefit from accelerated placement. It is not limited to students who have been identified as gifted or talented. Please contact the building principal for additional information.

Home and Hospital Instruction

A student who is absent from school, or whose physician, physician assistant or licensed advanced practice registered nurse anticipates his or her absence from school, because of a medical condition may be eligible for instruction in the student's home or hospital.

Appropriate educational services from qualified staff will begin no later than five school days after receiving a written statement from a physician, physician assistant, or licensed advanced practice registered nurse. Instructional or related services for a student receiving special education services will be determined by the student's individualized education program.

A student who is unable to attend school because of pregnancy or pregnancy-related conditions, the fulfillment of parenting obligations related to the health of the child, or health and safety concerns arising from domestic or sexual violence will be provided home instruction under the following circumstances:

1. Before the birth of the child when the student's physician, physician assistant, or advanced practice registered nurse indicates, in writing, that she is medically unable to attend regular classroom instruction.
2. For up to three months after the child's birth or a miscarriage.
3. When a student must care for his or her ill child if:
 - a. The child's physician, physician assistant, or advanced practice registered nurse informs the school, in writing, that the child has a serious health condition that would require the student to be absent from school for two or more consecutive weeks; and
 - b. The student or the student's parent/guardian informs the school, in writing, that the student needs to care for the child during this period.
4. The student must treat physical or mental health complications or address safety concerns arising from domestic or sexual violence when a health care provider or an employee of the student's domestic or sexual violence organization informs the school in writing that the care is needed by the student and will cause the student's absence from school for two or more consecutive weeks.

The school may reassess home instruction provided to a student under No. 3 or No. 4 every two months to determine the student's continuing need for home instruction.

Periodic conferences will be held between appropriate school personnel, parent(s)/guardian(s), and hospital staff to coordinate course work and facilitate a student's return to school.

For information on home or hospital instruction, contact Meagan Dwyer (mdwyer@gavin37.org).

STUDENT FEES AND SCHOOL LUNCH PROGRAM

Fines, Fees, and Charges; Waiver of Student Fees

The school establishes fees and charges to fund certain school activities. Students will not be denied educational services or academic credit due to the inability of their parent or guardian to pay fees or certain charges. Students whose parent or guardian is unable to afford student fees may receive a fee waiver. Fees that will not be waived include graduation fee, replacement ID, technology fee, sports, band, choir, and clubs.

Applications for fee waivers may be obtained from the school office and may be submitted by a parent or guardian of a student who has been assessed a fee. A student is eligible for a fee waiver if at least one of the following prerequisites is met:

- The child is directly certified by the State of Illinois as receiving SNAP or TANF benefits
- The child is categorically eligible (i.e. homeless, migrant or runaway or in Head Start)
- The child's household income is below the federal guidelines for free meals

The district designee will give additional consideration where one or more of the following factors are present:

- An illness in the family;
- Unusual expenses such as fire, flood, storm damage, etc.;
- Unemployment;
- Emergency situations; or
- When one or more of the parents/guardians are involved in a work stoppage.

The district designee will notify the parent/guardian promptly as to whether the fee waiver request has been granted or denied. Questions regarding the fee waiver application process or an appeal of the District's decision to deny a fee waiver should be addressed to the Business Manager.

Fines for loss or damage to school property are waived for students who meet certain eligibility guidelines.

Breakfast and Lunch Program

Gavin participates in the Community Eligibility Provision (CEP) program where school meals are available to all students at no cost to families. Only extra food items/snacks need to be purchased. We are presently being served by our own in-house food service staff.

Vandalism

The school district will seek restitution from students and their parents/guardians for vandalism or other students acts that cause damage to school property.

TRANSPORTATION

Bus Transportation

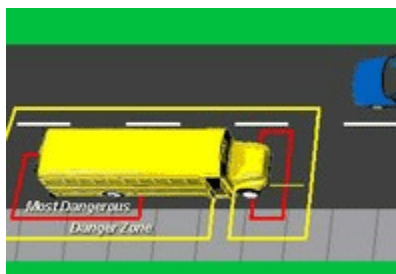
Bus transportation will be provided in such a manner as to ensure the safety of the students in the district and provide transportation for all students who live 1.5 miles away or more from school and/or find it necessary to cross busy highways, dangerous intersections or other hazardous conditions on their way to and from school. The location of bus stops will be determined by the safety factors already mentioned, the number of students at each stop, and bus capacities. Children should not be

expected to walk long distances along Wilson Road, Grand Avenue, Route 59, or Route 134. The superintendent/designee is responsible for determining routes, stops, and safety factors as described. Students are not permitted to ride a bus other than the bus to which they are assigned. Exceptions must be approved in advance by the transportation supervisor.

School Bus Safety Rules

In the interest of the student's safety and in compliance with State law, students are also expected to observe the following:

1. Be aware of moving traffic and pay attention to your surroundings.
2. Dress properly for the weather. Make sure all drawstrings, ties, straps, etc. on all clothing, backpacks and other items, are shortened or removed to lessen the likelihood of them getting caught in bus doors, railings or aisles.
3. Arrive on time at the bus stop and stay away from the street while waiting for the bus.
4. Stay away from the bus until it stops completely and the driver signals you to board. Enter in single file without pushing. Always use the handrail.
5. Take a seat right away and remain seated facing forward. Keep your hands, arms, and head inside the bus.
6. Talk quietly on the bus. No shouting or creating loud noises that may distract the driver. Tablets, computers, smart phones, smart watches, and other electronic devices must be silenced on the bus unless a student uses headphones.
7. Help keep the bus neat and clean. Keep belongings out of the aisle and away from emergency exits. Eating and drinking are not allowed on the bus.
8. Always listen to the driver's instructions. Be courteous to the driver and other students. Sit with your hands to yourself and avoid making noises that would distract the driver or bother other passengers.
9. Wait until the bus pulls to a complete stop before standing up. Use the handrail when exiting the bus.
10. Stay out of the danger zone next to the bus where the driver may have difficulty seeing you. Take at least five giant steps (10 feet) away from the bus and out of the danger zone, until you can see the driver and the driver sees you. Never crawl under a bus.
11. If you must cross the street after you get off the bus, wait for the driver's signal and then cross in front of the bus. Cross the street only after checking both ways for traffic, even after the driver's signal.
12. Never run back to the bus, even if you dropped or forgot something.



Video and audio cameras may be active on buses to record student conduct and may be used for the purposes of investigation into misconduct or accidents on the bus.

Bus Conduct

Students are expected to follow all school rules when riding the school bus. A student may be suspended from riding the bus for up to 10 consecutive school days for engaging in gross disobedience or misconduct, including but not limited to, the following:

1. Violating any school rule or school district policy.
2. Willful injury or threat of injury to a bus driver or to another rider.
3. Willful and/or repeated defacement of the bus.
4. Repeated use of profanity.
5. Repeated willful disobedience of a directive from a bus driver or other supervisor.
6. Such other behavior as the building principal deems to threaten the safe operation of the bus and/or its occupants.

If a student is suspended from riding the bus for gross disobedience or misconduct on a bus, the School Board may suspend the student from riding the school bus for a period in excess of 10 days for safety reasons.

A student suspended from riding the bus who does not have alternate transportation to school shall have the opportunity to complete or make up work for equivalent academic credit. It shall be the responsibility of the student's parent or guardian to notify the school that the student does not have alternate transportation.

HEALTHY AND SAFETY**Required Health Examinations and Immunizations**

All students are required to present appropriate proof of a health examination and the immunizations against, and screenings for, preventable communicable diseases within one year prior to:

1. Entering kindergarten or the first grade;
2. Entering the sixth and ninth grades; and
3. Enrolling in an Illinois school for the first time, regardless of the student's grade.

Proof of immunization against meningococcal disease is required for students in grades 6 and 12. A diabetes screening must be included as part of the health exam (though diabetes testing is not required). Students between the age of one and seven must provide a statement from a physician assuring that the student was "risk-assessed" or screened for lead poisoning. Beginning with the 2017-2018 school year, an age-appropriate developmental screening and an age-appropriate social and emotional screening are required parts of each health examination.

Failure to comply with the above requirements by October 15 of the current school year¹ will result in the student's exclusion from school until the required health forms are presented to the school, subject to certain exceptions. A student will not be excluded from school due to his or her parent/guardian's failure to obtain a developmental screening or a social and emotional screening.

New students who register mid-term have 30 days following registration to comply with the health examination and immunization requirements. If a medical reason prevents a student from receiving a required immunization by October 15, the student must present, by October 15, an immunization schedule and a statement of the medical reasons causing the delay. The schedule and statement of medical reasons must be signed by an appropriate medical professional.

Eye Examination

All students entering kindergarten or the school for the first time must present proof by October 15 of the current school year of an eye examination performed within one year. Failure to present proof by October 15, allows the school to hold the student's report card until the student presents: (1) proof of a completed eye examination, or (2) that an eye examination will take place within 60 days after October 15.

Dental Examination

All students entering kindergarten, second, sixth and ninth grades must present proof by May 15 of the current school year of having been examined by a licensed dentist within the last 18 months. Failure to present proof allows the school to hold the child's report card until the student presents: (1) proof of a completed dental examination, or (2) that a dental examination will take place within 60 days after May 15.

Exemptions

A student will be exempted from the above requirements for:

1. Medical grounds if the student's parent/guardian presents to the building principal a signed statement explaining the objection;
2. Religious grounds if the student's parent/guardian presents to the building principal a completed Certificate of Religious Exemption;
3. Health examination or immunization requirements on medical grounds if a physician provides written verification;
4. Eye examination requirement if the student's parent/guardian shows an undue burden or lack of access to a physician licensed to practice medicine in all of its branches who provides eye examinations or a licensed optometrist; or
5. Dental examination requirement if the student's parent/guardian shows an undue burden or a lack of access to a dentist.

Student Medication

Taking medication during school hours or during school-related activities is prohibited unless it is necessary for a student's health and well-being. When a student's licensed health care provider and parent/guardian believe that it is necessary for the student to take medication during school hours or school-related activities, the parent/guardian must request that the school dispense the medication to the child by completing a "School Medication Authorization Form."

No school or district employee is allowed to administer to any student, or supervise a student's self-administration of, any prescription or non-prescription medication until a completed and signed School Medication Authorization Form is submitted by the student's parent/guardian. No student is allowed to possess or consume any prescription or non-prescription medication on school grounds or at a school-related function other than as provided for in this procedure.

Self-Administration of Medication

A student may possess and self-administer an epinephrine injector (e.g., EpiPen®) and/or an asthma inhaler or medication prescribed for use at the student's discretion, provided the student's parent/guardian has completed and signed a School Medication Authorization Form.

Students who are diabetic may possess and self-administer diabetic testing supplies and insulin if authorized by the student's diabetes care plan, which must be on file with the school.

Students with epilepsy may possess and self-administer supplies, equipment and medication, if authorized by the student's seizure action plan, which must be on file with the school.

Students may self-administer (but not possess on their person) other medications required under a qualified plan, provided the student's parent/guardian has completed and signed a School Medication Authorization Form.

The school district shall incur no liability, except for willful and wanton conduct, as a result of any injury arising from a student's self-administration of medication, including asthma medication or epinephrine injectors, or medication required under a qualifying plan. A student's parent/guardian must indemnify and hold harmless the school district and its employees and agents, against any claims, except a claim based on willful and wanton conduct, arising out of a student's self-administration of an epinephrine injector, asthma medication, and/or a medication required under a qualifying plan.

Administration of Medical Cannabis

In accordance with the Compassionate Use of Medical Cannabis Program, qualifying students are allowed to utilize medical cannabis infused products while at school and school events. Please contact the building principal for additional information. Discipline of a student for being administered a product by a designated caregiver pursuant to this procedure is prohibited. The District may not deny a student attendance at a school solely because he or she requires administration of the product during school hours.

Undesignated Medications

The school does not maintain the following undesignated prescription medications for emergency use: (1) Asthma medication; (2) Epinephrine injectors; (3) Opioid antagonists; and (4) Glucagon. No one, including without limitation, parents/guardians of students, should rely on the school or district for the availability of undesignated medication. Students and their parents/guardians should consult their own physician regarding these medication(s).

Emergency Aid to Students

Nothing in this policy shall prohibit any school employee from providing emergency assistance to students, including administering medication.

Guidance & Counseling

The school provides a guidance and counseling program for students. The school's counselors are available to those students who require additional assistance.

Under Illinois law, any student 12 years of age or older may receive counseling services without consent of the student's parent/guardian. However, until the consent of the student's parent/guardian has been obtained, counseling services provided to a student under the age of 17 are generally limited to not more than eight 90-minute sessions.

Safety Drill Procedures and Conduct

Safety drills will occur at times established by the school board. Students are required to be silent and shall comply with the directives of school officials during emergency drills. There will be a minimum of three (3) evacuation drills, a minimum of one (1) severe weather (shelter-in-place) drill, a minimum of one (1) law enforcement lockdown drill to address a school shooting incident, and a minimum of one (1) bus evacuation drill each school year. There may be other drills at the direction of the administration. The law enforcement lockdown drill will be announced in advance and a student's parent/guardian may elect to exclude their child from participating in this drill. All other drills will not be preceded by a warning to students.

Communicable Diseases

The school will observe recommendations of the Illinois Department of Public Health regarding communicable diseases.

1. Parents are required to notify the school nurse if they suspect their child has a communicable disease.
2. In certain cases, students with a communicable disease may be excluded from school or sent home from school following notification of the parent or guardian.
3. The school will provide written instructions to the parent and guardian regarding appropriate treatment for the communicable disease.
4. A student excluded because of a communicable disease will be permitted to return to school only when the parent or guardian brings to the school a letter from the student's doctor stating that the student is no longer contagious or at risk of spreading the communicable disease.

Head Lice

The school will observe the following procedures regarding head lice.

1. Parents are required to notify the school nurse if they suspect their child has head lice.
2. Infested students will be sent home following notification of the parent or guardian.
3. The school will provide written instructions to parent or guardian regarding appropriate treatment for the infestation.
4. A student excluded because of head lice will be permitted to return to school only when the parent or guardian brings the student to school to be checked by the school nurse or building principal and the child is determined to be free of the head lice and eggs (nits). Infested children are prohibited from riding the bus to school to be checked for head lice.

Targeted School Violence Prevention Program

Threats and acts of targeted school violence harm the District's environment and school community, diminishing students' ability to learn and a school's ability to educate. Providing students and staff with access to a safe and secure environment is an important goal of the School and District. While it is not possible to completely eliminate threats, the School and District maintain a Targeted School Violence Prevention Program and a Threat Assessment Team to reduce these risks to its environment.

Parents/guardians and students are encouraged to report any expressed threats or behaviors that may represent a threat to the community, School, or self. Reports can be made to any school administrator, law enforcement authorities, or the Safe2Help Illinois helpline (www.safe2helpil.com/).

Students and parents are urged to participate in behavioral threat assessment and intervention programs if the Behavioral Threat Assessment Team believes that intervention is necessary to prevent a student from harming themselves or others. However, if for some reason there is a reluctance to participate in the process by the threat maker(s) or parent/guardian(s), the threat assessment process will continue in order to ensure a safe and caring learning environment for all.

For further information, please contact the Building Principal.

Targeted School Violence Prevention and Threat Assessment Education

Student safety is our District's top priority. To maximize safety, the District uses a threat assessment process to identify threats and prevent targeted school violence. This process is part of the Targeted School Violence Prevention Program (Program). For more information, see Board policy 4:190, Targeted School Violence Prevention Program. The Program is part of the preparedness and response phases of the School Emergency Operations and Crisis Response Plan, which in turn is part of the District's Comprehensive Safety and Security Plan.

The District wishes to create a climate that encourages sharing any information about a safety concern with a trusted adult who can help. Sharing information about threats and safety concerns is everyone's responsibility: students, parents/guardians, staff, and community members. The question-and-answer section below is designed to help students, parents/guardians, and staff understand when school officials want individuals to share information about a safety concern.

What Is a Threat?

A threat is a concerning communication or behavior that indicates that an individual may pose a danger to the safety of school staff or students through acts of violence or other behavior that could cause harm to self or others. It may be expressed/communicated behaviorally, orally, visually, in writing, electronically, or in another way. Threats may be direct ("I'm going to beat you up" or "I'm going to blow this place up!") or indirect ("Come and watch what I am going to do to her."). A threat can be vague ("I'm going to hurt him.") or implied ("You better watch out."). Any possession of a weapon or mention of one is a possible threat.

A threat is a threat regardless of whether it is observed by or communicated directly to the target of the threat or is observed by or communicated to a third party; and regardless of whether the target of the threat is aware of the threat.

Sometimes students make threats that may seem funny or "joking," but sometimes a threat is very serious and/or criminal. **When you are in doubt as to whether the statement is kidding or serious, the responsible thing to do is to tell the Principal or other responsible staff member.**

What Is Targeted School Violence?

Targeted School Violence includes school shootings and other school-based attacks where the school was deliberately selected as the location for the attack and was not simply a random site of opportunity. Individuals who have committed targeted violence did not "just snap," but engaged in a process of thought and escalation of action over days, weeks, months, and even years.

In the majority of incidents of targeted violence, perpetrators did not directly threaten their targets, but they did communicate their intent and/or plans to others before the violence. This indirect expression or third-party communication of intent to cause harm is often referred to as leakage. Reporting leakage is key to preventing targeted school violence.

Who Is Required to Report Threats?

All District staff, volunteers, and contractors are required to report any expressed threats or behaviors that may represent a threat to the community, school, or self to the Building Principal. Parents/guardians and students are also encouraged to report any such threats to the Building Principal.

Reported threats are assessed by the school's Threat Assessment Team (TAT). Each TAT includes people with expertise in counseling, instruction, school administration, and law enforcement. The goal of the threat assessment process is to take appropriate preventive or corrective measures to maintain a safe and secure school environment, to protect and support potential victims, and to provide assistance, as needed, to the individual being assessed.

The threat assessment process does not preclude anyone from acting immediately to address an imminent threat.

What Can Staff and Parents/Guardians Do?

The TAT will provide guidance to students and staff regarding recognizing concerning, aberrant, threatening, and prohibited behaviors to be reported. While there is no one list of behaviors that may cause concern, examples include, but are not limited to:

- Threatening statements or gestures
- Persons with ongoing, unresolved grievances with members of the school community
- Atypical, unusual, or bizarre communications or behavior
- Significant changes in behavior
- Increased focus or fixation on aspects of violence, harm, or death
- Information about someone expressing thoughts, plans, or preparations for violence
- Concerns that someone may harm themselves
- Behavior that significantly disrupts the learning or working environment
- Behavior that seems troubling or disturbing
- Persons seeming isolated and alienated from others
- Anyone unknown to the school

Staff and parents/guardians can reinforce this guidance by discussing with students what a threat is, encouraging students not to make threats or “joking” statements in the first place, and reiterating that seeking help to prevent someone from getting hurt or hurting another by reporting threats is appropriate.

Students Who are Parents, Expectant Parents, or Victims of Domestic or Sexual Violence

Domestic and sexual violence affect a student's ability to learn. Students who are parents or expectant parents have unique needs. Providing support services that enable students who are parents, expectant parents, or victims of domestic or sexual violence (Article 26A Students) to succeed in school are important school and district goals and are required by law.

Requesting Support Services

To facilitate the full participation of Article 26A Students, the school district provides in-school support services and information regarding non-school-based support services. Article 26A Students are also able to make up work missed on account of circumstances related to their status as a parent, expectant parent, or victim of domestic or sexual violence.

In-school support services include, but are not limited to, enabling a student to meet with counselors or other service providers, excusing the student from class as necessary for circumstances consistent with their Article 26A status, and assisting students with the development of a student success plan.

An Article 26A Student and/or their parent/guardian may request a complete copy of the District’s policies related to Article 26A Students and information on support services by contacting the Article 26A Resource Person listed below.

Filing a Complaint

An Article 26A Student and/or their parent/guardian may file a complaint for violations of this procedure with the Nondiscrimination Coordinator, Title IX Coordinator, Building Principal, Assistant Building Principal, Dean of Students, a Complaint Manager, or any employee with whom the person is comfortable speaking.

Article 26A Resource Person:

Meagan Dwyer

25775 W. Highway 134
Ingleside, IL 60041

mdwyer@gavin37.org

847/546-2916 ext 221

Nondiscrimination Coordinator:

Dr. Scott Schwartz, Superintendent

25775 W. Highway 134
Ingleside, IL 60041

sschwartz@gavin37.org

847/546-2916 ext 314

Complaint Managers:

Meagan Dwyer

25775 W. Highway 134
Ingleside, IL 60041

mdwyer@gavin37.org

847/546-9336 ext 221

Title IX Coordinator:

Meagan Dwyer

25775 W. Highway 134
Ingleside, IL 60041

mdwyer@gavin37.org

847/546-2916 ext 221

Jason Jurgaitis

25775 W. Highway 134
Ingleside, IL 60041

jjurgaitis@gavin37.org

847/546-9336 ext 253

Retaliation Prohibited

Retaliation against an Article 26A Student or their parent/guardian for exercising or attempting to exercise their rights under this procedure is prohibited. Individuals should report allegations of retaliation to the Building Principal, an administrator, the Nondiscrimination Coordinator, and/or a Complaint Manager.

DISCIPLINE AND CONDUCT

General Building Conduct

Students are expected to behave respectfully, responsibly, and safely in and around the school.

Dress Code & Student Appearance

A student's appearance, including dress and hygiene, must not disrupt the educational process or compromise standards of health and safety. The school does not prohibit hairstyles historically associated with race, ethnicity, or hair texture, including, but not limited to, protective hairstyles such as braids, locks, and twists. The school will not prohibit students from wearing or accessorizing the student's graduation attire with items associated with the student's cultural, ethnic, or religious identity or any other protected characteristic or category identified in the Illinois Human Rights Act. Students who disrupt the educational process or compromise standards of health and safety must modify their appearance.

Students are expected to wear clothing in a neat, clean, and well-fitting manner while on school property and/or in attendance at school sponsored activities. Students are to use discretion in their dress and are not permitted to wear apparel that causes a substantial disruption in the school environment.

- Student dress (including accessories) may not advertise, promote, or picture alcoholic beverages, illegal drugs, drug paraphernalia, violent behavior, or other inappropriate images.
- Student dress (including accessories) may not display lewd, vulgar, obscene, or offensive language or symbols, including gang symbols.
- Hats, coats, bandannas, sweat bands, and sunglasses may not be worn in the building during the school day.
- Hair styles, dress, and accessories that pose a safety hazard are not permitted in the shop, laboratories, or during physical education.
- Clothing with holes, rips, tears, and clothing that is otherwise poorly fitting, showing skin and/or undergarments may not be worn at school.
- The length of shorts or skirts must be appropriate for the school environment.
- Appropriate footwear must be worn at all times.
- If there is any doubt about dress and appearance, the building principal will make the final decision.
- Students whose dress causes a substantial disruption of the orderly process of school functions or endangers the health or safety of the student, other students, staff or others may be subject to discipline.

Student Behavior

Prohibited Student Conduct: Students may be disciplined for gross disobedience or misconduct, including but not limited to the following:

1. Using, possessing, distributing, purchasing, selling or offering tobacco or nicotine materials, including electronic cigarettes, e-cigarettes, vapes, vape pens or other vaping related products.
2. Using, possessing, distributing, purchasing, or selling alcoholic beverages. Students who are under the influence of an alcoholic beverage are not permitted to attend school or school functions and are treated as though they had alcohol in their possession.
3. Using, possessing, distributing, purchasing, selling or offering for sale:
 - a. Any illegal drug, controlled substance, or cannabis (including marijuana, hashish, and medical cannabis unless the student is authorized to be administered a medical cannabis infused product under *Ashley's Law*).
 - b. Any anabolic steroid unless it is being administered in accordance with a physician's or licensed practitioner's prescription.
 - c. Any performance-enhancing substance on the Illinois High School Association's most current banned substance list unless administered in accordance with a physician's or licensed practitioner's prescription.
 - d. Any prescription drug when not prescribed for the student by a physician or licensed practitioner, or when used in a manner inconsistent with the prescription or prescribing physician's or licensed practitioner's instructions. The use or possession of medical cannabis, even by a student for whom medical cannabis has been prescribed, is prohibited unless the student is authorized to be administered a medical cannabis infused product under *Ashley's Law*.

- e. Any inhalant, regardless of whether it contains an illegal drug or controlled substance:
 - (a) that a student believes is, or represents to be capable of, causing intoxication, hallucination, excitement, or dulling of the brain or nervous system; or
 - (b) about which the student engaged in behavior that would lead a reasonable person to believe that the student intended the inhalant to cause intoxication, hallucination, excitement, or dulling of the brain or nervous system. The prohibition in this section does not apply to a student's use of asthma or other legally prescribed inhalant medications.
- f. "Look-alike" or counterfeit drugs, including a substance that is not prohibited by this policy, but one:
 - (a) that a student believes to be, or represents to be, an illegal drug, controlled substance, or other substance that is prohibited by this policy; or
 - (b) about which a student engaged in behavior that would lead a reasonable person to believe that the student expressly or impliedly represented to be an illegal drug, controlled substance or other substance that is prohibited by this policy.
- g. Drug paraphernalia, including devices that are or can be used to: (a) ingest, inhale, or inject cannabis or controlled substances into the body; and (b) grow, process, store, or conceal cannabis or controlled substances.
- h. Any substance inhaled, injected, smoked, consumed or otherwise ingested or absorbed with the intention of causing a physiological or psychological change in the body, including without limitation, pure caffeine in a tablet or powdered form.

Students who are under the influence of any prohibited substance are not permitted to attend school or school functions and are treated as though they have the prohibited substance, as applicable, in their possession.

- 4. Using, possessing, controlling or transferring a "weapon" or violating the procedures listed below under the Weapons Prohibition section of this handbook procedure.
- 5. Using or possessing an electronic paging device.
- 6. Using a cellular telephone, smartphone, video recording device, personal digital assistant (PDA), or similar electronic device in any manner that disrupts the educational environment or violates the rights of others, including using the device to take photographs in locker rooms or bathrooms, cheat, or otherwise violate student conduct rules. Unless otherwise banned under this policy or by the building principal, all cellular phones, smartphones and other electronic devices must be kept powered-off and out-of-sight during the regular school day unless:
 - (a) the supervising teacher grants permission;
 - (b) use of the device is provided in a student's individualized education program (IEP);
 - (c) it is used during the student's lunch period; or
 - (d) it is needed in an emergency that threatens the safety of students, staff, or other individuals..

7. Using or possessing a laser pointer unless under a staff member's direct supervision and in the context of instruction.
8. Disobeying rules of student conduct or directives from staff members or school officials. Examples of disobeying staff directives include refusing a staff member's request to stop, present school identification or submit to a search.
9. Engaging in academic dishonesty, including cheating, intentionally plagiarizing, wrongfully giving or receiving help during an academic examination, altering report cards and wrongfully obtaining test copies or scores.
10. Engaging in bullying, hazing or any kind of aggressive behavior that does physical or psychological harm to a staff person or another student or encouraging other students to engage in such behavior. Prohibited conduct specifically includes, without limitation, any use of violence, intimidation, force, noise, coercion, threats, stalking, harassment, sexual harassment, public humiliation, theft or destruction of property, retaliation, hazing, bullying, bullying using a school computer or a school computer network or other comparable conduct.
11. Engaging in any sexual activity, including without limitation, offensive touching, sexual harassment, indecent exposure (including mooning) and sexual assault.
12. Engaging in teen dating violence.
13. Causing or attempting to cause damage to, stealing, or attempting to steal, school property or another person's personal property.
14. Entering school property or a school facility without proper authorization.
15. In the absence of a reasonable belief that an emergency exists, calling emergency responders (calling 9-1-1); signaling or setting off alarms or signals indicating the presence of an emergency; or indicating the presence of a bomb or explosive device on school grounds, school bus or at any school activity.
16. Being absent without a recognized excuse.
17. Being involved with any public school fraternity, sorority, or secret society.
18. Being involved in a gang or engaging in gang-like activities, including displaying gang symbols or paraphernalia.
19. Violating any criminal law, including but not limited to, assault, battery, arson, theft, gambling, eavesdropping, vandalism and hazing.
20. Engaging in any activity, on or off campus, that interferes with, disrupts, or adversely affects the school environment, school operations, or an educational function, including but not limited to, conduct that may reasonably be considered to:
 - (a) be a threat or an attempted intimidation of a staff member; or
 - (b) endanger the health or safety of students, staff, or school property.
21. Making an explicit threat on an Internet website against a school employee, a student, or any school-related personnel if the Internet website through which the threat was made is a site that was accessible within the school at the time the threat was made or was available to third parties who worked or studied within the school grounds at the time the threat was made, and the threat could be reasonably interpreted as threatening to the safety and security of the threatened individual because of his or her duties or employment status or status as a student inside the school.
22. Operating an unarmed aircraft system (AUS) or drone for any purpose on school grounds or at any school event unless granted permission by the building principal.
23. Sexting, which, for purposes of this procedure, is the act of creating, sending, sharing, viewing, receiving, or possessing sexually explicit messages, images, or videos electronically, regardless of whether they are authentic or computer-generated, through the use of a computer, electronic communication device, or cellular phone. Sexting also includes creating, sending, sharing, viewing, receiving, or possessing indecent visual depictions,

non-consensual dissemination of private sexual images, and non-consensual dissemination of sexually explicit digitized depictions, as defined in State law.

For purposes of these rules, the term “possession” includes having control, custody, or care, currently or in the past, of an object or substance, including situations in which the item is:

- (a) on the student’s person;
- (b) contained in another item belonging to, or under the control of, the student, such as in the student’s clothing, backpack, or automobile;
- (c) in a school’s student locker, desk, or other school property;
- (d) at any location on school property or at a school-sponsored event; or
- (e) in the case of drugs and alcohol, substances ingested by the person.

Efforts, including the use of positive interventions and supports shall be made to deter students, while at school or a school-related event, from engaging in aggressive behavior that may reasonably produce physical or psychological harm to someone else.

No disciplinary action shall be taken against any student that is based totally or in part on the refusal of the student’s parent/guardian to administer or consent to the administration of psychotropic or psychostimulant medication to the student.

When and Where Conduct Rules Apply

The grounds for disciplinary action also apply whenever the student’s conduct is reasonably related to school or school activities, including but not limited to:

1. On, or within sight of, school grounds before, during, or after school hours or at any time;
2. Off school grounds at a school-sponsored activity or event, or any activity or event that bears a reasonable relationship to school;
3. Traveling to or from school or a school activity, function, or event;
4. Anywhere, if the conduct interferes with, disrupts, or adversely affects the school environment, school operations, or an educational function, including but not limited to, conduct that may reasonably be considered to:
 - (a) be a threat or an attempted intimidation of a staff member; or
 - (b) endanger the health or safety of students, staff, or school property; or
5. During periods of remote learning.

Disciplinary Measures

School officials shall limit the number and duration of expulsions and out-of-school suspensions to the greatest extent practicable, and, where practicable and reasonable, shall consider forms of non-exclusionary discipline before using out-of-school suspensions or expulsions. School personnel shall not advise or encourage students to drop out of school voluntarily due to behavioral or academic difficulties. Potential disciplinary measures include, without limitation, any of the following measures:

1. Notifying parents/guardians.
2. Disciplinary conference.
3. Withholding of privileges.
4. Temporary removal from the classroom.
5. Return of property or restitution for lost, stolen or damaged property.
6. In-school suspension.

7. After-school study or Saturday study provided the student's parent/guardian has been notified. (If transportation arrangements cannot be made in advance, an alternative disciplinary measure will be assigned to the student.)
8. Community service.
9. Seizure of contraband; confiscation and temporary retention of the personal property that was used to violate school rules.
10. Suspension of bus riding privileges.
11. Suspension from school and all school activities for up to 10 days. A suspended student is prohibited from being on school grounds.
12. Expulsion from school and all school activities for a definite time period not to exceed 2 calendar years. An expelled student is prohibited from being on school grounds.
13. Transfer to an alternative program if the student is expelled or otherwise qualifies for transfer under State law.
14. Notifying juvenile authorities or other law enforcement whenever the conduct involves criminal activity, such as, illegal drugs (controlled substances), "look-alikes," alcohol or weapons or in other circumstances as authorized by the reciprocal reporting agreement between the District and local law enforcement agencies.

The above list of disciplinary measures is a range of options that will not always be applicable in every case. In some circumstances, it may not be possible to avoid suspending or expelling a student because behavioral interventions, other than a suspension or expulsion, will not be appropriate and available, and the only reasonable and practical way to resolve the threat and/or address the disruption is a suspension or expulsion.

Isolated Time Out, Time Out and Physical Restraint

Isolated time out, time out, and physical restraint shall only be used if the student's behavior presents an imminent danger of serious physical harm to the student or others and other less restrictive and intrusive measures were tried and proven ineffective in stopping it. The school may not use isolated time out, time out, and physical restraint as discipline or punishment, convenience for staff, retaliation, a substitute for appropriate educational or behavioral support, a routine safety matter, or to prevent property damage in the absence of imminent danger of serious physical harm to the student or others. The use of prone restraint is prohibited.

Corporal Punishment

Corporal punishment is prohibited in all circumstances. Corporal punishment is defined as a discipline method in which a person deliberately inflicts pain upon a student in response to the student's unacceptable behavior or inappropriate language, with an aim or set an example for others. It includes slapping, paddling, or prolonged maintenance of students in physically painful positions, or intentional infliction of bodily harm. Corporal punishment does not include reasonable force as permitted by State law.

Weapons Prohibition

A student who is determined to have brought one of the following objects to school, any school-sponsored activity or event, or any activity or event that bears a reasonable relationship to school shall be expelled for a period of not less than one year but not more than 2 calendar years:

- (1) A firearm, meaning any gun, rifle, shotgun, weapon as defined by Section 921 of Title 18 of the United States Code, firearm as defined in Section 1.1 of the Firearm Owners Identification Card Act, or firearm as defined in Section 24-1 of the Criminal Code of 1961. The expulsion period may be

modified by the superintendent, and the superintendent's determination may be modified by the board on a case-by-case basis.

(2) A knife, brass knuckles or other knuckle weapon regardless of its composition, a billy club, or any other object if used or attempted to be used to cause bodily harm, including "look alikes" of any firearm as defined above.

The expulsion requirement may be modified by the superintendent, and the superintendent's determination may be modified by the board on a case-by-case basis.

Gang & Gang Activity Prohibited

"Gang" is defined as any group, club or organization of two or more persons whose purposes include the commission of illegal acts. No student on or about school property or at any school activity or whenever the student's conduct is reasonably related to a school activity, shall:

- (1) wear, possess, use, distribute, display, or sell any clothing, jewelry, paraphernalia or other items which reasonably could be regarded as gang symbols; commit any act or omission, or use either verbal or non-verbal gestures, or handshakes showing membership or affiliation in a gang; or
- (2) use any speech or commit any act or omission in furtherance of the interest of any gang or gang activity, including, but not limited to, soliciting others for membership in any gangs;
- (3) request any person to pay protection or otherwise intimidate, harass or threaten any person;
- (4) commit any other illegal act or other violation of district policies,
- (5) or incite other students to act with physical violence upon any other person.

Re-Engagement of Returning Students

The building principal or designee shall meet with a student returning to school from an out-of-school suspension, expulsion or alternative school setting. The goal of this meeting shall be to support the student's ability to be successful in school following a period of exclusion and shall include an opportunity for students who have been suspended to complete or make-up missed work for equivalent academic credit.

Prevention of and Response to Bullying, Intimidation, and Harassment

Bullying, intimidation, and harassment diminish a student's ability to learn and a school's ability to educate. Preventing students from engaging in these disruptive behaviors and providing all students equal access to a safe, non-hostile learning environment are important district and school goals.

Bullying on the basis of actual or perceived race, color, national origin, military status, unfavorable discharge from military service, sex, sexual orientation, gender orientation, gender-related identity or expression, ancestry, age, religion, physical or mental disability, physical appearance, socioeconomic status, academic status, order of protection status, homelessness, actual or marital status, parenting status, pregnancy, parenting status, association with a person or group with one or more of the aforementioned actual or perceived characteristics, or any other distinguishing characteristic **is prohibited** in each of the following situations:

1. During any school-sponsored education program or activity.
2. While in school, on school property, on school buses or other school vehicles, at designated school bus stops waiting for the school bus, or at school-sponsored or school-sanctioned events or activities.

3. Through the transmission of information from a school computer, a school computer network, or other similar electronic school equipment.
4. Through the transmission of information from a computer that is accessed at a non-school-related location, activity, function, or program or from the use of technology or an electronic device that is not owned, leased, or used by the school district or school if the bullying causes a substantial disruption to the educational process or orderly operation of a school.

Bullying includes cyber-bullying and means any severe or pervasive physical or verbal act or conduct, including communications made in writing or electronically, directed toward a student or students that has or can be reasonably predicted to have the effect of one or more of the following:

1. Placing the student or students in reasonable fear of harm to the student's or students' person or property;
2. Causing a substantially detrimental effect on the student's or students' physical or mental health;
3. Substantially interfering with the student's or students' academic performance; or
4. Substantially interfering with the student's or students' ability to participate in or benefit from the services, activities, or privileges provided by a school.

Cyberbullying means bullying through the use of technology or any electronic communication, including without limitation any transfer of signs, signals, writing, images, sounds, data, or intelligence of any nature transmitted in whole or in part by a wire, radio, electromagnetic system, photo-electronic system, or photo-optical system, including without limitation electronic mail, Internet communications, instant messages, or facsimile communications. Cyberbullying includes the creation of a webpage or weblog in which the creator assumes the identity of another person or the knowing impersonation of another person as the author of posted content or messages if the creation or impersonation creates any of the effects enumerated in the definition of bullying. Cyberbullying also includes the distribution by electronic means of a communication to more than one person or the posting of material on an electronic medium that may be accessed by one or more persons if the distribution or posting creates any of the effects enumerated in the definition of bullying.

Bullying may take various forms, including without limitation one or more of the following: harassment, threats, intimidation, stalking, physical violence, sexual harassment, sexual violence, theft, public humiliation, destruction of property, or retaliation for asserting or alleging an act of bullying. This list is meant to be illustrative and non-exhaustive.

Students are encouraged to immediately report bullying. A report may be made orally or in writing to the building principal, nondiscrimination coordinator, district complaint manager or any staff member with whom the student is comfortable speaking. All school staff members are available for help with a bully or to make a report about bullying. Anyone, including staff members and parents/guardians, who has information about actual or threatened bullying is encouraged to report it to the district complaint manager or any staff member. Anonymous reports are also accepted by phone call or in writing.

Nondiscrimination Coordinator:

Dr. Scott Schwartz, Superintendent

25775 W. Highway 134,

Title IX Coordinator:

Meagan Dwyer

25775 W. Highway 134,

Ingleside, IL 60041

sschwartz@gavin37.org

847/546-2916 ext 314

Complaint Managers:

Meagan Dwyer

25775 W. Highway 134,
Ingleside, IL 60041

mdwyer@gavin37.org

847/546-9336

Ingleside, IL 60041

mdwyer@gavin37.org

847/546-2893

Jason Jurgaitis

25775 W. Highway 134,
Ingleside, IL 60041

jjurgaitis@gavin37.org

847/546-2893

A reprisal or retaliation against any person who reports an act of bullying is prohibited. A student's act of reprisal or retaliation will be treated as bullying for purposes of determining any consequences or other appropriate remedial actions.

A student will not be punished for reporting bullying or supplying information, even if the school's investigation concludes that no bullying occurred. However, knowingly making a false accusation or providing knowingly false information will be treated as bullying for purposes of determining any consequences or other appropriate remedial actions.

Students and parents/guardians are also encouraged to read the following school district policies: 7:20, *Harassment of Students Prohibited* and 7:180, *Prevention of and Response to Bullying, Intimidation and Harassment*.^[1]

Consistent with federal and State laws and rules governing student privacy rights, the school shall make diligent efforts to notify a parent or guardian within 24-hours after the school's administration is made aware of a student's involvement in an alleged bullying incident. The term "bullying incident" includes individual instances of bullying, as well as all threats, suggestions, or instances of self-harm determined to be a result of bullying. Notification to a parent or guardian shall include, as appropriate, the availability of social work services, counseling, school psychological services, other interventions, and restorative measures.

Discrimination and Harassment on the Basis of Race, Color, and National Origin Prohibited

Discrimination and harassment on the basis of race, color, or national origin negatively affects a student's ability to learn and an employee's ability to work. Providing an educational and workplace environment free from such discrimination and harassment is an important District and School goal. The District and School do not discriminate on the basis of actual or perceived race, color, or national origin in any of its education programs or activities and comply with federal and State non-discrimination laws.

Examples of Prohibited Conduct

Examples of conduct that may constitute discrimination on the basis of race, color, or national origin include: disciplining students more harshly and frequently because of their race, color, or national origin; denying students access to high-rigor academic courses, extracurricular activities, or other educational opportunities based on their race, color, or national origin; denying language services or other educational opportunities to English learners; and assigning students special education services based on a student's race, color, or national origin.

Harassment is a form of prohibited discrimination. Examples of conduct that may constitute harassment on the basis of race, color, or national origin include: the use of racial, ethnic or ancestral slurs or stereotypes; taunts; name-calling; offensive or derogatory remarks about a person's actual or perceived race, color, or national origin; the display of racially-offensive symbols; racially-motivated physical threats and attacks; or other hateful conduct.

Making a Report or Complaint; Investigation Process

Individuals are encouraged to promptly report claims or incidences of discrimination or harassment based on race, color, or national origin to the Nondiscrimination Coordinator, a Complaint Manager, or any employee with whom the student is comfortable speaking. Reports will be processed under the District's Uniform Grievance Procedure.

Reports and complaints of discrimination or harassment will be confidential to the greatest extent practicable, subject to the District's duty to investigate and maintain an educational environment that is productive, respectful, and free of unlawful discrimination, including harassment.

Federal and State Agencies

If the District fails to take necessary corrective action to stop harassment based on race, color, or national origin, further relief may be available through the Illinois Dept. of Human Rights (IDHR) or the U.S. Dept. of Education's Office for Civil Rights. To contact IDHR, go to: <https://dhr.illinois.gov/about-us/contact-idhr.html> or call (312) 814-6200 (Chicago) or (217) 785-5100 (Springfield).

Prevention and Response Program

The District maintains a prevention and response program to respond to complaints of discrimination based on race, color, and national origin, including harassment, and retaliation. The program includes procedures for responding to complaints which:

1. Reduce or remove, to the extent practicable, barriers to reporting discrimination, harassment, and retaliation;
2. Permit any person who reports or is the victim of an incident of alleged discrimination, harassment, or retaliation to be accompanied when making a report by a support individual of the person's choice who complies with the District's policies and rules;
3. Permit anonymous reporting, except that an anonymous report may not be the sole basis of any disciplinary action;
4. Offer remedial interventions or take such disciplinary action as may be appropriate on a case-by-case basis;

5. Offer, but do not require or unduly influence, a person who reports or is the victim of an incident of harassment or retaliation the option to resolve allegations directly with the accused; and
6. Protects a person who reports or is the victim of an incident of harassment or retaliation from suffering adverse consequences as a result of a report of, investigation of, or a response to the incident.

Enforcement

Any District employee who is determined, after an investigation, to have engaged in conduct prohibited by this policy will be subject to remedial action and/or disciplinary action, up to and including discharge.

Any District student who is determined, after an investigation, to have engaged in conduct prohibited by this policy will be subject to remedial action and/or disciplinary action, including but not limited to, suspension and expulsion, consistent with the student discipline information in this handbook.

Any third party who is determined, after an investigation, to have engaged in conduct prohibited by this policy will be addressed in accordance with the authority of the Board in the context of the relationship of the third party to the District, e.g., vendor, parent, invitee, etc. Any person making a knowingly false accusation regarding prohibited conduct will likewise be subject to remedial and/or disciplinary action.

Retaliation Prohibited

Retaliation against any person for bringing complaints, participating in the complaint process, or otherwise providing information about discrimination or harassment based on race, color, or national origin is prohibited.

Individuals should report allegations of retaliation to the Building Principal, an administrator, the Nondiscrimination Coordinator, and/or a Complaint Manager.

Harassment & Teen Dating Violence Prohibited

No person, including a school or school district employee or agent, or student, shall harass, intimidate, or bully a student on the basis of actual or perceived race; color; national origin; military status; unfavorable discharge status from military service; sex; sexual orientation; gender identity[1]; gender-related identity or expression; ancestry; age; religion; physical or mental disability; order of protection status; status of being homeless; actual or potential marital or parental status, including pregnancy; physical appearance; socioeconomic status; academic status; association with a person or group with one or more of the aforementioned actual or perceived characteristics; or any other distinguishing characteristic. The District will not tolerate harassing, intimidating conduct, or bullying whether verbal, physical, sexual, or visual, that affects the tangible benefits of education, that unreasonably interferes with a student's educational performance, or that creates an intimidating, hostile, or offensive educational environment. Examples of prohibited conduct include name-calling, using derogatory slurs, stalking, sexual violence, causing psychological harm, threatening or causing physical harm, threatened or actual destruction of property, or wearing or possessing items depicting or implying hatred or prejudice of one of the characteristics stated above.

Sexual Harassment Prohibited (Title IX)

The School and District shall provide an educational environment free of verbal, physical, or other conduct or communications constituting harassment on the basis of sex as defined and otherwise prohibited by State and federal law.

A District employee, agent, or student violates this prohibition whenever that person engages in conduct on the basis of sex that causes another person to be excluded from participation in, be denied the benefits of, or otherwise be subjected to discrimination under any education program or activity operated by the District. Sex discrimination includes discrimination on the basis of sex, stereotypes, sex characteristics, pregnancy or related conditions, sexual orientation, and/or gender identity.

Teen Dating Violence Prohibited

Engaging in teen dating violence that takes place at school, on school property, at school-sponsored activities, or in vehicles used for school-provided transportation is prohibited. For purposes of this policy, the term *teen dating violence* occurs whenever a student who is 13 to 19 years of age uses or threatens to use physical, mental, or emotional abuse to control an individual in the dating relationship; or uses or threatens to use sexual violence in the dating relationship.

For more information about this issue, please see the Centers for Disease Control and Prevention's educational materials at: www.cdc.gov/injury/features/dating-violence/index.html.

Making a Report or Complaint

Students are encouraged to promptly report claims or incidences of bullying, intimidation, harassment, sexual harassment, or any other prohibited conduct to the Nondiscrimination Coordinator, Building Principal, Assistant Building Principal, Dean of Students, a Complaint Manager, or any employee with whom the student is comfortable speaking. A student may choose to report to an employee of the student's same gender.

Nondiscrimination Coordinator:

Scott Schwartz, Superintendent
25775 W Highway 134
Ingleside, IL 60041
(847) 546-2916 x314
sschwartz@gavin37.org

Complaint Managers:

Meagan Dwyer, Director of Student Services
25775 W Highway 134
Ingleside, IL 60041
(847) 546-9336 x321
mdwyer@gavin37.org

Jason Jurgaitis, Principal
25775 W Highway 134
Ingleside, IL 60041
(847) 546-2893
jjurgaitis@gavin37.org

Any person making a knowingly false accusation regarding prohibited conduct will likewise be subject to discipline.

Investigation Process

Reports and complaints of discrimination or harassment will be confidential to the greatest extent practicable, subject to the District's duty to investigate and maintain an educational environment that is productive, respectful, and free of unlawful discrimination, including harassment.

Enforcement

Any District employee who is determined, after an investigation, to have engaged in conduct prohibited by this policy will be subject to remedial action and/or disciplinary action, up to and including discharge.

Any District student who is determined, after an investigation, to have engaged in conduct prohibited by this policy will be subject to remedial action and/or disciplinary action, including but not limited to, suspension and expulsion, consistent with the student discipline information in this handbook.

Any third party who is determined, after an investigation, to have engaged in conduct prohibited by this policy will be addressed in accordance with the authority of the Board in the context of the relationship of the third party to the District, e.g., vendor, parentguardian, invitee, etc. Any person making a knowingly false accusation regarding prohibited conduct will likewise be subject to remedial and/or disciplinary action.

Retaliation Prohibited

Retaliation against any person for bringing complaints, participating in the complaint process, or otherwise providing information about discrimination or harassment based on race, color, or national origin is prohibited.

Individuals should report allegations of retaliation to the Building Principal, an administrator, the Nondiscrimination Coordinator, and/or a Complaint Manager.

Cafeteria Rules (K-8)

1. Students shall not save seats for other students.
2. Students shall walk to lunch and shall be orderly and quiet during lunch.
3. Trays shall be stacked neatly after placing silverware in its proper container. No food shall leave the cafeteria.
4. Loud talking, yelling, screaming, and other disruptions are prohibited.
5. Students shall not throw food, milk cartons or other items.
6. Students shall not trade food.
7. Students shall follow the instructions of the lunchroom aides and show proper respect toward all cafeteria personnel.
8. Students shall remain seated while in the cafeteria except to return to the lunch line or return trays.
9. Students shall immediately become silent when staff or presenters make announcements in the cafeteria.
10. Students shall report spills and broken containers to cafeteria staff immediately.
11. Students shall be dismissed from the cafeteria by the lunchroom supervisor.

Misbehavior will result in disciplinary action according to the school's disciplinary procedures.

Field Trips

Field trips are a privilege for students. Students must abide by all school policies during transportation and during field-trip activities, and shall treat all field trip locations as though they are school grounds. Failure to abide by school rules and/or location rules during a field trip may subject the student to discipline.

All students who wish to attend a field trip must receive written permission from a parent or guardian with authority to give permission. Students may be prohibited from attending field trips for any of the following reasons:

- Failure to receive appropriate permission from parent/guardian or teacher;
- Failure to complete appropriate coursework;
- Behavioral or safety concerns;
- Denial of permission from administration;
- Other reasons as determined by the school.

Access to Student Social Networking Passwords & Websites

School officials may conduct an investigation or require a student to cooperate in an investigation if there is specific information about activity on the student's account on a social networking website that violates a school disciplinary rule or policy. In the course of an investigation, the student may be required to share the content that is reported in order to allow school officials to make a factual determination.

Student Use of Electronic Devices

The use of electronic devices and other technology at school is a privilege, not a right. Students are prohibited from using electronic devices, except as provided herein. An electronic device includes, but is not limited to, the following: cell phone, smart phone, audio or video recording device, personal digital assistant (PDA), ipod®, ipad®, laptop computer, tablet computer or other similar electronic device. Pocket pagers and other paging devices are not allowed on school property at any time, except with the express permission of the building principal.

Phones are not to be used during school. Every South Middle School student will be assigned a personal Yondr Pouch. While the Yondr Pouch is considered school property, it is each student's responsibility to bring their Pouch with them to school every day and keep it in good working condition.

DAILY PROCESS

As students **arrive at school**, they will:

- 1) Turn their phone on airplane mode, turn it to silent, or turn it off.
- 2) Place their smart device(s) (i.e. phone, smart watch, and/or airpods) inside their pouch and secure it in the presence of school staff.
- 3) Store their pouch in a secure place (backpack, pocket, locker).

At the end of the day, students will unlock their pouch, remove their smart device(s) and put their pouch in a secure place to bring back to school with them each day.

***Students arriving late or leaving early will pouch/unpouch their phones in the main office.

VIOLATIONS

Pouch Damage / Lost Pouch / Using Phone During School

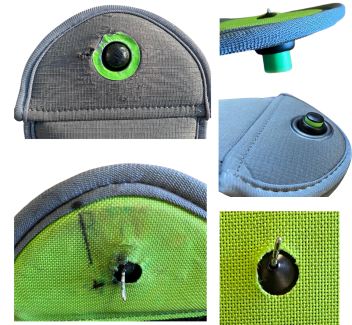
If a student damages their pouch or is caught using their phone, administration will collect the student's pouch/phone and call home.

Repercussions for damaged pouches or unauthorized phone use will include:

- **A phone call home for the first offense, followed by progressive disciplinary action, as defined in the Student/Parent Handbook under "Disciplinary Measures" and in Board policy 7:192.**
- **\$30 fee for a replacement pouch**

Examples of pouch damage include:

- Bent pin
- Ripped fabric
- Deep scratches on the lock exterior + green ring
- Intentional pen marks on the inside of the pouch
- Pin and button not fully recessing due to pin damage



Forgotten Pouches

If a student forgets their pouch, they will bring it to the main office, **without consequence**, to store it in a safe place for the day. Students can pick up their phone at dismissal. Administration/Dean of Students will call home to put a support plan in place for students who are forgetting their pouches regularly.

Electronic devices may never be used in any manner that disrupts the educational environment, violates student conduct rules or violates the rights of others. This includes, but is not limited to, the following:

- (1) using the device to take photographs in locker rooms or bathrooms;
- (2) cheating; and
- (3) creating, sending, sharing, viewing, receiving, or possessing an indecent visual depiction or non-consensual dissemination of private sexual images (i.e., sexting).

The school and school district are not responsible for the loss, theft or damage to any electronic device brought to school.

School officials may conduct an investigation or require a student to cooperate in an investigation if there is specific information about activity on the student's account on a social networking website that violates a school disciplinary rule or policy. In the course of an investigation, the student may be required to share the content that is reported in order to allow school officials to make a factual determination.

INTERNET, TECHNOLOGY, & PUBLICATIONS

Acceptable Use of the District's Electronic Networks

All use of the District's *electronic networks* shall be consistent with the District's goal of promoting educational excellence by facilitating resource sharing, innovation, and communication. These

procedures do not attempt to state all required or prohibited behavior by users. However, some specific examples are provided. **The failure of any user to follow these procedures will result in the loss of privileges, disciplinary action, and/or legal action.**

Terms and Conditions

The term *electronic* networks includes all of the District's technology resources, including, but not limited to:

1. The District's local-area and wide-area networks, including wireless networks (Wi-Fi), District-provided Wi-Fi hotspots, and any District servers or other networking infrastructure;
2. Access to the Internet or other online resources via the District's networking infrastructure or to any District-issued online account from any computer or device, regardless of location;
3. District-owned and District-issued computers, laptops, tablets, phones, or similar devices.

Acceptable Use – Access to the District's electronic networks must be: (a) for the purpose of education or research, and be consistent with the District's educational objectives, or (b) for legitimate business use.

Privileges – Use of the District's electronic networks is a privilege, not a right, and inappropriate use may result in a cancellation of those privileges, disciplinary action, and/or appropriate legal action. The system administrator or building principal will make all decisions regarding whether or not a user has violated these procedures and may deny, revoke, or suspend access at any time. His or her decision is final.

Unacceptable Use – The user is responsible for his or her actions and activities involving the electronic networks. Some examples of unacceptable uses are:

- Using the electronic networks for any illegal activity, including violation of copyright or other intellectual property rights or contracts, or transmitting any material in violation of any State or federal law;
- Using the electronic networks to engage in conduct prohibited by board policy;
- Unauthorized downloading of software or other files, regardless of whether it is copyrighted or scanned for malware;
- Unauthorized use of personal removable media devices (such as flash or thumb drives);
- Downloading of copyrighted material for other than personal use;
- Using the electronic networks for private financial or commercial gain;
- Wastefully using resources, such as file space;
- Hacking or attempting to hack or gain unauthorized access to files, accounts, resources, or entities by any means;
- Invading the privacy of individuals, including the unauthorized disclosure, dissemination, and use of information about anyone that is of a personal nature, such as a photograph or video;
- Using another user's account or password;
- Disclosing any network or account password (including your own) to any other person, unless requested by the system administrator;
- Posting or sending material authored or created by another without his/her consent;
- Posting or sending anonymous messages;

- Creating or forwarding chain letters, spam, or other unsolicited messages;
- Using the electronic networks for commercial or private advertising;
- Accessing, sending, posting, publishing, or displaying any abusive, obscene, profane, sexual, threatening, harassing, illegal, or knowingly false material;
- Misrepresenting the user's identity or the identity of others; and
- Using the electronic networks while access privileges are suspended or revoked.

Network Etiquette – The user is expected to abide by the generally accepted rules of network etiquette. These include, but are not limited to, the following:

- Be polite. Do not become abusive in messages to others.
- Use appropriate language. Do not swear, or use vulgarities or any other inappropriate language.
- Do not reveal personal information, including the addresses or telephone numbers, of students or colleagues.
- Recognize that the District's electronic networks are not private. People who operate District technology have access to all email and other data. Messages or other evidence relating to or in support of illegal activities may be reported to the authorities.
- Do not use the networks in any way that would disrupt its use by other users.
- Consider all communications and information accessible via the electronic networks to be private property.

No Warranties – The District makes no warranties of any kind, whether expressed or implied, for the service it is providing. The District will not be responsible for any damages the user suffers. This includes loss of data resulting from delays, non-deliveries, missed-deliveries, or service interruptions caused by its negligence or the user's errors or omissions. Use of any information obtained via the Internet is at the user's own risk. The District specifically denies any responsibility for the accuracy or quality of information obtained through its services.

Indemnification – By using the District's electronic networks, the user agrees to indemnify the District for any losses, costs, or damages, including reasonable attorney fees, incurred by the District relating to, or arising out of, any violation of these procedures.

Security – Network security is a high priority. If the user can identify or suspects a security problem on the network, the user must promptly notify the system administrator or Building Principal. Do not demonstrate the problem to other users. Keep user account(s) and password(s) confidential. Do not use another individual's account without written permission from that individual. Attempts to log-on to the network as a system administrator will result in cancellation of user privileges. Any user identified as a security risk may be denied access to the networks.

Vandalism – Vandalism will result in cancellation of privileges and other disciplinary action. Vandalism is defined as any malicious attempt to harm or destroy data of another user, the Internet, or any other network. This includes, but is not limited to, the uploading or creation of malware, such as viruses and spyware.

Telephone Charges – The District assumes no responsibility for any unauthorized charges or fees, including telephone charges, texting or data use charges, long-distance charges, per-minute surcharges, and/or equipment or line costs.

Copyright Web Publishing Rules – Copyright law and District policy prohibit the re-publishing of text or graphics found on the Internet or on District websites or file servers/cloud storage without explicit written permission.

- For each re-publication (on a website or file server) of a graphic or a text file that was produced externally, there must be a notice at the bottom of the page crediting the original producer and noting how and when permission was granted. If possible, the notice should also include the web address of the original source.
- Students engaged in producing web pages must provide library media specialists with email or hard copy permissions before the web pages are published. Printed evidence of the status of *public domain* documents must be provided.
- The absence of a copyright notice may not be interpreted as permission to copy the materials. Only the copyright owner may provide the permission. The manager of the website displaying the material may not be considered a source of permission.
- The *fair use* rules governing student reports in classrooms are less stringent and permit limited use of graphics and text.
- Student work may only be published if there is written permission from both the parent/guardian and student.

Use of Email – The District’s email system, and its constituent software, hardware, and data files, are owned and controlled by the District. The District provides email to aid students in fulfilling their duties and responsibilities, and as an education tool.

- The District reserves the right to access and disclose the contents of any account on its system, without prior notice or permission from the account’s user. Unauthorized access by any student to an email account is strictly prohibited.
- Each person should use the same degree of care in drafting an email message as would be put into a written memorandum or document. Nothing should be transmitted in an email message that would be inappropriate in a letter or memorandum.
- Electronic messages transmitted via the District’s Internet gateway carry with them an identification of the user’s Internet *domain*. This domain is a registered name and identifies the author as being with the District. Great care should be taken, therefore, in the composition of such messages and how such messages might reflect on the name and reputation of the District. Users will be held personally responsible for the content of any and all email messages transmitted to external recipients.
- Any message received from an unknown sender via the Internet, such as spam or potential phishing emails, should either be immediately deleted or forwarded to the system administrator. Downloading any file attached to any Internet-based message is prohibited unless the user is certain of that message’s authenticity and the nature of the file so transmitted.
- Use of the District’s email system constitutes consent to these regulations.

Internet Safety

Internet access is limited to only those *acceptable uses* as detailed in these procedures. Internet safety is supported if users will not engage in *unacceptable uses*, as detailed in these procedures, and otherwise follow these procedures.

Staff members will supervise students while students are using District Internet access to ensure that the students abide by the *Terms and Conditions* for Internet access contained in these procedures.

Each District computer with Internet access has a filtering device that blocks entry to visual depictions that are: (1) obscene, (2) pornographic, or (3) harmful or inappropriate for students, as defined by the Children’s Internet Protection Act and as determined by the Superintendent or designee.

The system administrator and building principal shall monitor student Internet access.

Guidelines for Student Distribution of Non-School Sponsored Publications

A student or group of students seeking to distribute more than 10 copies of the same material on one or more days to students must comply with the following guidelines:

1. The student(s) must notify the building principal of the intent to distribute, in writing, at least 24 hours before distributing the material. No prior approval of the material is required.
2. The material may be distributed at times and locations selected by the building principal, e.g., before the beginning or ending of classes at a central location inside the building.
3. The building principal may impose additional requirements whenever necessary to prevent disruption, congestion, or the perception that the material is school-endorsed.
4. Distribution must be done in an orderly and peaceful manner, and may not be coercive.
5. The distribution must be conducted in a manner that does not cause additional work for school personnel. Students who distribute material are responsible for cleaning up any materials left on school grounds.
6. Students must not distribute material that:
 - a. Will cause a material and substantial disruption of the proper and orderly operation and discipline of the school or school activities;
 - b. Violates the rights of others, including but not limited to, material that is libelous, slanderous or obscene, invades the privacy of others, or infringes on a copyright;
 - c. Is socially inappropriate or inappropriate due to the students' maturity level, including but not limited to, material that is obscene, pornographic, or pervasively lewd and vulgar, contains indecent and vulgar language, or sexting as defined by School Board policy and Student Handbook;
 - d. Is reasonably viewed as promoting illegal drug use;
 - e. Is distributed in kindergarten through eighth grade and is primarily prepared by non-students, unless it is being used for school purposes. However, material from outside sources or the citation to such sources may be allowed, as long as the material to be distributed or accessed is primarily prepared by students; or
 - f. Incites students to violate any Board policy.
7. A student may use the School District's Uniform Grievance Procedure to resolve a complaint.
8. Whenever these guidelines require written notification, the appropriate administrator may assist the student in preparing such notification.

A student or group of students seeking to distribute 10 or fewer copies of the same publication on one or more days to students must distribute such material at times and places and in a manner that will not cause substantial disruption of the proper and orderly operation and discipline of the school or school activities and in compliance with paragraphs 4, 5, 6, and 7.

Access to Non-School Sponsored Publications Accessed or Distributed On Campus

Creating, distributing, and/or accessing non-school sponsored publications shall occur at a time and place and in a manner that will not cause disruption, be coercive, or result in the perception that the distribution or the publication is endorsed by the School District.

Students are prohibited from creating, distributing, and/or accessing at school any publication that:

1. Will cause a material and substantial disruption of the proper and orderly operation and discipline of the school or school activities;
2. Violates the rights of others, including but not limited to material that is libelous, slanderous or obscene, invades the privacy of others, or infringes on a copyright;
3. Is socially inappropriate or inappropriate due to maturity level of the students, including but not limited to material that is obscene, pornographic, or pervasively lewd and vulgar, contains indecent and vulgar language, or *sexting* as defined by School Board policy and the Student Handbook;
4. Is reasonably viewed as promoting illegal drug use;
5. Is distributed in kindergarten through eighth grade and is primarily prepared by non-students, unless it is being used for school purposes. However, material from outside sources or the citation to such sources may be allowed, as long as the material to be distributed or accessed is primarily prepared by students; or
6. Incites students to violate any Board policies.

Accessing or distributing *on-campus* includes accessing or distributing on school property or at school-related activities. A student engages in gross disobedience and misconduct and may be disciplined for: (1) accessing or distributing forbidden material, or (2) for writing, creating, or publishing such material intending for it to be accessed or distributed at school.

Non-School Sponsored Publications Accessed or Distributed Off-Campus

A student engages in gross disobedience and misconduct and may be disciplined for creating and/or distributing a publication that: (1) causes a substantial disruption or a foreseeable risk of a substantial disruption to school operations, or (2) interferes with the rights of other students or staff members.

Annual Notice to Parents about Educational Technology Vendors Under the Student Online Personal Protection Act

School districts throughout the State of Illinois contract with different educational technology vendors for beneficial K-12 purposes such as providing personalized learning and innovative educational technologies, and increasing efficiency in school operations.

Under Illinois' Student Online Personal Protection Act, or SOPPA (105 ILCS 85/), educational technology vendors and other entities that operate Internet websites, online services, online applications, or mobile applications that are designed, marketed, and primarily used for K-12 school purposes are referred to in SOPPA as *operators*. SOPPA is intended to ensure that student data collected by operators is protected, and it requires those vendors, as well as school districts and the Illinois State Board of Education, to take a number of actions to protect online student data.

Depending upon the particular educational technology being used, our District may need to collect different types of student data, which is then shared with educational technology vendors through their online sites, services, and/or applications. Under SOPPA, educational technology vendors are prohibited from selling or renting a student's information or from engaging in targeted advertising using a student's information. Such vendors may only disclose student data for K-12 school purposes and other limited purposes permitted under the law.

In general terms, the types of student data that may be collected and shared include personally identifiable information (PII) about students or information that can be linked to PII about students, such as:

- Basic identifying information, including student or parent/guardian name and student or parent/guardian contact information, username/password and student ID number
- Demographic information
- Enrollment information
- Assessment data, grades, and transcripts
- Attendance and class schedule
- Academic/extracurricular activities
- Special indicators (e.g., disability information, Multilingual language learner, free/reduced meals or homeless/foster care status)
- Conduct/behavioral data
- Health information
- Food purchases
- Transportation information
- In-application performance data
- Student-generated work
- Online communications
- Application metadata and application use statistics
- Permanent and temporary school student record information

Operators may collect and use student data only for K-12 purposes, which are purposes that aid in the administration of school activities, such as:

- Instruction in the classroom or at home (including remote learning)
- Administrative activities
- Collaboration between students, school personnel, and/or parents/guardians
- Other activities that are for the use and benefit of the school district

Use of Artificial Intelligence

“Artificial intelligence” or “AI” is intelligence demonstrated by computers, as opposed to human intelligence. "Intelligence" encompasses the ability to learn, reason, generalize, and infer meaning. Examples of AI technology include ChatGPT and other chatbots and large language models.

AI is not a substitute for schoolwork that requires original thought. Students may not claim AI generated content as their own work. The use of AI to take tests, complete assignments, create multimedia projects, write papers, or complete schoolwork without permission of a teacher or administrator is strictly prohibited. The use of AI for these purposes constitutes cheating or plagiarism.

In certain situations, AI may be used as a learning tool or a study aid. Students who wish to use AI for legitimate educational purposes must have permission from a teacher or an administrator. Students may use AI as authorized in their Individualized Education Program (IEP).

Students may not use AI, including AI image or voice generator technology, to violate school rules or school district policies.

In order to ensure academic integrity, tests, assignments, projects, papers, and other schoolwork may be checked by AI content detectors and/or plagiarism recognition software.

SEARCH AND SEIZURE

Search and Seizure

In order to maintain order safety and security in the schools, school authorities are authorized to conduct reasonable searches of school property and equipment, as well as of students and their personal effects. “School authorities” includes school liaison police officers.

School Property and Equipment as well as Personal Effects Left There by Students

School authorities may inspect and search school property and equipment owned or controlled by the school (such as lockers, desks, and parking lots), as well as personal effects left there by a student, without notice to or the consent of the student. Students have no reasonable expectation of privacy in these places or areas or in their personal effects left there.

The Building Principal may request the assistance of law enforcement officials to conduct inspections and searches of lockers, desks, parking lots, and other school property and equipment for illegal drugs, weapons, or other illegal or dangerous substances or materials, including searches conducted through the use of specially trained dogs.

Students Searches

School authorities may search a student and/or the student’s personal effects in the student’s possession (such as, purses, wallets, knapsacks, book bags, lunch boxes, etc.) when there is a reasonable ground for suspecting that the search will produce evidence the particular student has violated or is violating either the law or the school or district’s student rules and policies. The search will be conducted in a manner that is reasonably related to its objective of the search and not excessively intrusive in light of the student’s age and sex, and the nature of the infraction.

School officials may require a student to cooperate in an investigation if there is specific information about activity on the student’s account on a social networking website that violates the school’s disciplinary rules or school district policy. In the course of the investigation, the student may be required to share the content that is reported in order for the school to make a factual determination. School officials may not request or require a student or his or her parent/guardian to provide a password or other related account information to gain access to the student’s account or profile on a social networking website.

Seizure of Property

If a search produces evidence that the student has violated or is violating either the law or the school or district’s policies or rules, evidence may be seized and impounded by school authorities, and disciplinary action may be taken. When appropriate, evidence may be transferred to law enforcement authorities.

Questioning of Students Suspected of Committing Criminal Activity

Before a law enforcement officer, school resource officer, or other school security person detains and questions on school grounds a student under 18 years of age who is suspected of committing a criminal act, the building principal or designee will:

- (a) Notify or attempt to notify the student’s parent/guardian and document the time and manner in writing;
- (b) Make reasonable efforts to ensure the student’s parent/guardian is present during questioning or, if they are not present, ensure that a school employee (including, but not

limited to, a social worker, psychologist, nurse, guidance counselor, or any other mental health professional) is present during the questioning; and
(c) If practicable, make reasonable efforts to ensure that a law enforcement officer trained in promoting safe interactions and communications with youth is present during the questioning.

EXTRACURRICULAR AND ATHLETIC ACTIVITIES

Extracurricular and Athletic Activities Code of Conduct

This Extracurricular and Athletic Activities Code of Conduct applies, where applicable, to all school-sponsored athletic and extracurricular activities that are not part of an academic class nor otherwise carry credit for a grade.

Requirements for Participation in Athletic Activities

A student must meet all academic eligibility requirements, pay the sports fee, and have a current physical on file in the school office before being allowed to participate in any athletic activity.

Academic Eligibility

Selection of members or participants in extracurricular and athletic activities is at the discretion of the designated teachers, sponsors, and coaches.

Absence from School on Day of Extracurricular or Athletic Activity

A student who is absent from school for more than half of the school day is ineligible for any extracurricular or athletic activity on that day unless the absence has been approved in writing by the principal. Exceptions may be made by the designated teacher, sponsor or coach for justifiable reasons, including:

- 1) a pre-arranged medical absence;
- 2) a death in the student's family; or
- 3) a religious ceremony or event.

A student who has been suspended from school is also suspended from participation in all extracurricular and athletic activities for the duration of the suspension.

A student who is absent from school on a Friday before a Saturday event may be withheld from Saturday extracurricular or athletic activities at the sole discretion of the designated teacher, sponsor or coach.

Code of Conduct

This Code of Conduct applies to all extracurricular and athletic activities and is enforced 365 days a year, 24 hours a day.

This Code does not contain a complete list of inappropriate behaviors. Violations will be treated cumulatively, with disciplinary penalties increasing with subsequent violations. A student may be excluded from extracurricular or athletic activities while the school is conducting an investigation into the student's conduct.

The student shall not:

1. Violate the school rules and School District policies on student discipline including policies and procedures on student behavior;

2. Ingest or otherwise use, possess, buy, sell, offer to sell, barter, or distribute a beverage containing alcohol (except for religious purposes);
3. Ingest or otherwise use possess, buy, sell, offer to sell, barter, or distribute tobacco or nicotine in any form;
4. Ingest or otherwise use, possess, buy, sell, offer to sell, barter, or distribute any product composed purely of caffeine in a loose powdered form or any illegal substance (including mood-altering and performance enhancing drugs or chemicals) or paraphernalia;
5. Use, possess, buy, sell, offer to sell, barter, or distribute any object that is or could be considered a weapon or any item that is a look alike weapon. This prohibition does not prohibit legal use of weapons in cooking and in athletics, such as archery, martial arts practice, target shooting, hunting, and skeet;
6. Attend a party or other gathering and/or ride in a vehicle where alcoholic beverages and/or controlled substances are being consumed by minors;
7. Act in an unsportsmanlike manner;
8. Violate any criminal law, including but not limited to, assault, battery, arson, theft, gambling, eavesdropping, vandalism and reckless driving;
9. Haze or bully other students;
10. Violate the written rules for the extracurricular or athletic activity;
11. Behave in a manner that disrupts or adversely affects the group or school;
12. Be insubordinate or disrespectful toward the activity's sponsors or team's coaching staff; or
13. Falsify any information contained on any permit or permission form required by the extracurricular or athletic activity.

Hazing is any humiliating or dangerous activity expected of a student to belong to a team or group, regardless of his or her willingness to participate. *Bullying* includes cyber-bullying (bullying through the use of technology or any electronic communication) and means any physical or verbal act or conduct, including communications made in writing or electronically, directed toward a student or students that has or can be reasonably predicted to have the effect of one or more of the following:

1. Placing the student or students in reasonable fear of harm to the student's or students' person or property;
2. Causing a detrimental effect on the student's or students' physical or mental health;
3. Interfering with the student's or students' academic performance; or
4. Interfering with the student's or students' ability to participate in or benefit from the services, activities, or privileges provided by a school.

Examples of prohibited conduct include name-calling, using derogatory slurs, stalking, sexual violence, causing psychological harm, threatening or causing physical harm, threatened or actual destruction of property, or wearing or possessing items depicting or implying hatred or prejudice of one of the characteristics stated above.

All students remain subject to all the School District's policies and the school's student/parent handbook.

Modification of Athletic or Team Uniform

Students may modify their athletic or team uniform for the purpose of modesty in clothing or attire that is in accordance with the requirements of the student's religion or the student's cultural values or modesty preferences.

Attendance at School-Sponsored Dances

- Attendance at school-sponsored dances is a privilege.
- Only students who attend the school may attend school-sponsored dances.
- All school rules, including the school's discipline code and dress code are in effect during school-sponsored dances.
- Students who violate the school's discipline code will be required to leave the dance immediately and the student's parent/guardian will be contacted. The school may also impose other discipline as outlined in the school's discipline code.

Student Athlete Concussions and Head Injuries

Student athletes must comply with Illinois' Youth Sports Concussion Safety Act and all protocols, policies and bylaws of the Illinois Elementary School Association before being allowed to participate in any athletic activity, including practice or competition.

A student who was removed from practice or competition because of a suspected concussion shall be allowed to return only after all statutory prerequisites are completed, including without limitation, the School District's return-to-play and return-to-learn protocols.

SPECIAL EDUCATION**Education of Children with Disabilities**

It is the intent of the district to ensure that students who are disabled within the definition of Section 504 of the Rehabilitation Act of 1973 or the Individuals with Disabilities Education Act are identified, evaluated and provided with appropriate educational services.

If a parent/guardian suspects that his or her child is in need of identification, assessment, and placement services for a child that is or may qualify as a student with a disability, the parent/guardian should contact his or her building principal or:

Meagan Dwyer, Director of Student Services
(847) 546-9336 x221
25775 W Highway 134
Ingleside, IL 60041
mdwyer@gavin37.org

The School provides a free appropriate public education in the least restrictive environment and necessary related services to all children with disabilities enrolled in the school. The term "children with disabilities" means children between ages 3 and the day before their 22nd birthday for whom it is determined that special education services are needed, except those children with disabilities who turn 22 years of age during the school year are eligible for special education services through the end of the school year. It is the intent of the school to ensure that students with disabilities are identified, evaluated, and provided with appropriate educational services.

A copy of the publication "Explanation of Procedural Safeguards Available to Parents of Students with Disabilities" may be obtained from the school district office.

Students with disabilities who do not qualify for an individualized education program, as required by the federal Individuals with Disabilities Education Act and implementing provisions of this Illinois law, may qualify for services under Section 504 of the federal Rehabilitation Act of 1973 if the student

- (1) has a physical or mental impairment that substantially limits one or more major life activities,
- (2) has a record of a physical or mental impairment, or
- (3) is regarded as having a physical or mental impairment.

Discipline of Students with Disabilities

Behavioral Interventions

Behavioral interventions shall be used with students with disabilities to promote and strengthen desirable behaviors and reduce identified inappropriate behaviors. The School Board will establish and maintain a committee to develop, implement, and monitor procedures on the use of behavioral interventions for children with disabilities.

Discipline of Special Education Students

The District shall comply with the Individuals With Disabilities Education Improvement Act of 2004 and the Illinois State Board of Education's *Special Education* rules when disciplining special education students. No special education student shall be expelled if the student's particular act of gross disobedience or misconduct is a manifestation of his or her disability.

Isolated Time Out, Time Out, and Physical Restraint

Isolated time out, time out, and physical restraint shall only be used if the student's behavior presents an imminent danger of serious physical harm to the student or others, and other less restrictive and intrusive measures were tried and proven ineffective in stopping it. The School may not use isolated time out, time out, or physical restraint as discipline or punishment, convenience for staff, retaliation, as a substitute for appropriate educational or behavioral support, a routine safety matter, or to prevent property damage in the absence of imminent danger of serious physical harm to the student or others. The use of prone restraint is prohibited.

Exemption from Physical Education Requirement

A student who is eligible for special education may be excused from physical education courses in either of the following situations:

1. He or she
 - (a) is in grades 3-12,
 - (b) his or her IEP requires that special education support and services be provided during physical education time, and
 - (c) the parent/guardian agrees or the IEP team makes the determination; or
2. He or she
 - (a) has an IEP,
 - (b) is participating in an adaptive athletic program outside of the school setting, and
 - (c) the parent/guardian documents the student's participation as required by the Superintendent or designee.

A student requiring adapted physical education will receive that service in accordance with the student's Individualized Education Program.

Request to Access Classroom or Personnel for Special Education Evaluation or Observation

The parent/guardian of a student receiving special education services, or being evaluated for eligibility, is afforded reasonable access to educational facilities, personnel, classrooms, and buildings. This same right of access is afforded to an independent educational evaluator or a qualified professional retained by or on behalf of a parent or child.

For further information, please contact the building principal.

Related Service Logs

For a child with an individualized education program (IEP), the school district must create related service logs that record the type of related services administered under the child's IEP and the minutes of each type of related service that has been administered. The school will provide a child's parent/guardian a copy of the related service log at the annual review of the child's IEP and at any other time upon request.

PUNS (Prioritization of Urgency of Need for Services) Database Information for Students and Parents or Guardians

The Illinois Department of Human Services (IDHS) maintains a statewide database known as the PUNS database (Prioritization of Urgency of Need for Services) that records information about individuals with intellectual disabilities or developmental disabilities who are potentially in need of services.

IDHS uses the data on PUNS to select individuals for services as funding becomes available, to develop proposals and materials for budgeting, and to plan for future needs. The PUNS database is available for children with intellectual disabilities or developmental disabilities with unmet service needs.

Registration to be included on the PUNS database is the first step toward receiving developmental disabilities services in this State. A child who is not on the PUNS database will not be in the queue for State developmental disabilities services.

For more information and to sign up for PUNS, see the Illinois Department of Human Services PUNS information page at <https://www.dhs.state.il.us/page.aspx?item=41131>.

You may also contact the following District employee for assistance:

Meagan Dwyer, Director of Student Services, at mdwyer@gavin37.org

STUDENT RECORDS & PRIVACY**Student Privacy Protections**

Surveys requesting personal information from students, as well as any other instrument used to collect personal information from students, must advance or relate to the District's educational objectives, or assist students' career choices. This applies to all surveys, regardless of whether the student answering the questions can be identified or who created the survey.

Surveys by Third Parties: Before a school official or staff member administers or distributes a survey or evaluation created by a third party to a student, the student's parent/guardian may inspect the

survey or evaluation, upon their request and within a reasonable time of their request. This applies to every survey:

- (1) that is created by a person or entity other than a district official, staff member, or student,
- (2) regardless of whether the student answering the questions can be identified, and
- (3) regardless of the subject matter of the questions.

Parents who object to disclosure of information concerning their child to a third party may do so in writing to the building principal.

Surveys Requesting Personal Information

School officials and staff members will not request, nor disclose, the identity of any student who completes any survey or evaluation (created by any person or entity, including the school or district) containing one or more of the following items:

1. Political affiliations or beliefs of the student or the student's parent/guardian.
2. Mental or psychological problems of the student or the student's family.
3. Behavior or attitudes about sex.
4. Illegal, anti-social, self-incriminating, or demeaning behavior.
5. Critical appraisals of other individuals with whom students have close family relationships.
6. Legally recognized privileged or analogous relationships, such as those with lawyers, physicians, and ministers.
7. Religious practices, affiliations, or beliefs of the student or the student's parent/guardian.
8. Income other than that required by law to determine eligibility for participation in a program or for receiving financial assistance under such a program.

The student's parent/guardian may:

- (1) inspect the survey or evaluation upon, and within a reasonable time of, their request, and/or
- (2) refuse to allow their child to participate in the survey. The school will not penalize any student whose parent/guardian exercised this option.

Instructional Material

A student's parent/guardian may inspect, upon their request, any instructional material used as part of their child's educational curriculum within a reasonable time of their request.

The term "instructional material" means instructional content that is provided to a student, regardless of its format, printed or representational materials, audio-visual materials, and materials in electronic or digital formats (such as materials accessible through the Internet). The term does not include academic tests or academic assessments.

Complaints About Curriculum, Instructional Materials, and Programs

Parents or guardians have the right to inspect all instructional materials used as a part of their child's education. If you believe that curriculum, instructional materials, or programs violate rights guaranteed by any law or Board policy, you may file a complaint under the District's uniform grievance policy. Parents or guardians with other suggestions or complaints about curriculum, instructional materials, or programs should complete a Curriculum Objection Form, which is

available from the school office. A parent or guardian may also request that their child be exempt from using a particular instructional material or program by completing a Curriculum Objection Form.

Prohibition on Selling or Marketing Students' Personal Information

No school official or staff member may market or sell personal information concerning students (or otherwise provide that information to others for that purpose). The term *personal information* means individually identifiable information including:

- (1) a student or parent's first and last name,
- (2) a home or other physical address (including street name and the name of the city or town),
- (3) a telephone number,
- (4) a Social Security identification number or
- (5) driver's license number or State identification card.

Unless otherwise prohibited by law, the above paragraph does not apply:

- (1) if the student's parent/guardian have consented; or
- (2) to the collection, disclosure or, use of personal information collected from students for the exclusive purpose of developing, evaluating or providing educational products or services for, or to, students or educational institutions, such as the following:
 1. College or other postsecondary education recruitment, or military recruitment.
 2. Book clubs, magazines, and programs providing access to low-cost literary products.
 3. Curriculum and instructional materials used by elementary schools and secondary schools.
 4. Tests and assessments to provide cognitive, evaluative, diagnostic, clinical, aptitude, or achievement information about students (or to generate other statistically useful data for the purpose of securing such tests and assessments) and the subsequent analysis and public release of the aggregate data from such tests and assessments.
 5. The sale by students of products or services to raise funds for school-related or education-related activities.
 6. Student recognition programs.

Under no circumstances may a school official or staff member provide a student's personal information to a business organization or financial institution that issues credit or debit cards

A parent/guardian who desires to opt their child out of participation in activities provided herein or who desires a copy or access to a survey or any other material described herein may contact the building principal.

A complete copy of the District's Student and Family Privacy Rights policy may be obtained from the Superintendent's office or accessed on the District's website ([7:15 Student and Family Privacy Rights](#)).

Student Records

A school student record is any writing or other recorded information concerning a student and by which a student may be identified individually that is maintained by a school or at its direction or by a school employee, regardless of how or where the information is stored, except for certain records kept

in a staff member's sole possession; records maintained by law enforcement officers working in the school; video and other electronic recordings (including electronic recordings made on school busses) that are created in part for law enforcement, security, or safety reasons or purposes, though such electronic recordings may become a student record if the content is used for disciplinary or special education purposes regarding a particular student.

The Family Educational Rights and Privacy Act (FERPA) and the Illinois Student Records Act afford parents/guardians and students over 18 years of age ("eligible students") certain rights with respect to the student's school records. They are:

1. The right to inspect and copy the student's education records within 10 business days of the day the District receives a request for access.

The degree of access a student has to his or her records depends on the student's age. Students less than 18 years of age have the right to inspect and copy only their permanent record. Students 18 years of age or older have access and copy rights to both permanent and temporary records. A parent/guardian or student should submit to the building principal a written request that identifies the record(s) he or she wishes to inspect. Within 10 business days, the building principal will make arrangements for access and notify the parent/guardian or student of the time and place where the records may be inspected. In certain circumstances, the District may request an additional 5 business days in which to grant access. The District charges \$.35 per page for copying but no one will be denied their right to copies of their records for inability to pay this cost.

These rights are denied to any person against whom an order of protection has been entered concerning the student.

2. The right to request the amendment of the student's education records that the parent/guardian or eligible student believes are inaccurate, irrelevant, or improper.

A parent/guardian or eligible student may ask the District to amend a record that is believed to be inaccurate, irrelevant, or improper. Requests should be sent to the building principal and should clearly identify the record the parent/guardian or eligible student wants changed and the specific reason a change is being sought.

If the District decides not to amend the record, the District will notify the parent/guardian or eligible student of the decision and advise him or her of their right to a hearing regarding the request for amendment. Additional information regarding the hearing procedures will be provided to the parent/guardian or eligible student when notified of the right to a hearing.

3. The right to permit disclosure of personally identifiable information contained in the student's education records, except to the extent that the FERPA or Illinois School Student Records Act authorizes disclosure without consent.

Disclosure without consent is permitted to school officials with legitimate educational or administrative interests. A school official is a person employed by the District as an administrator, supervisor, instructor, or support staff member (including health or medical staff and law enforcement unit personnel); a person serving on the School Board. A school official may also include a volunteer, contractor, or consultant who, while not employed by the school, performs an institutional service or function for which the school would otherwise use its own employees and who is under the direct control of the school with respect to the use and maintenance of personally identifiable information

from education records (such as an attorney, auditor, medical consultant, therapist, or educational technology vendor); or any parent/guardian or student serving on an official committee, such as a disciplinary or grievance committee, or assisting another school official in performing his or her tasks. A school official has a legitimate educational interest if the official needs to review an education record in order to fulfill his or her professional responsibility or contractual obligation with the district.

Upon request, the District discloses education records without consent to officials of another school district in which a student has enrolled or intends to enroll, as well as to any person as specifically required by State or federal law. Before information is released to these individuals, the parents/guardians or eligible student will receive prior written notice of the nature and substance of the information, and an opportunity to inspect, copy, and challenge such records.

Academic grades and references to expulsions or out-of-school suspensions cannot be challenged at the time a student's records are being forwarded to another school to which the student is transferring.

Disclosure is also permitted without consent to: any person for research, statistical reporting or planning, provided that no student or parent/guardian can be identified; to another school district that overlaps attendance boundaries with the District, if the District has entered into an intergovernmental agreement that allows for sharing of student records and information with the other district, any person named in a court order; appropriate persons if the knowledge of such information is necessary to protect the health or safety of the student or other persons; and juvenile authorities when necessary for the discharge of their official duties who request information before adjudication of the student.

4. The right to a copy of any school student record proposed to be destroyed or deleted.

The permanent record is maintained for at least 60 years after the student transfers, graduates, or permanently withdraws. The temporary record is maintained for at least 5 years after the student transfers, graduates, or permanently withdraws. Temporary records that may be of assistance to a student with a disability who graduates or permanently withdraws, may, after 5 years, be transferred to the parent/guardian or to the student, if the student has succeeded to the rights of the parent/guardian. Student temporary records are reviewed every 4 years or upon a student's change in attendance centers, whichever occurs first.

5. The right to prohibit the release of directory information.

Throughout the school year, the District may release directory information regarding students, limited to:

- Name
- Address
- Grade level
- Birth date and place
- Parent/guardian names, addresses, electronic mail addresses, and telephone numbers
- Photographs, videos, or digital images used for informational or news-related purposes (whether by a media outlet or by the school) of a student participating in school or school-sponsored activities, organizations, and athletics that have appeared in school publications, such as yearbooks, newspapers, or sporting or fine arts programs
- Academic awards, degrees, and honors
- Information in relation to school-sponsored activities, organizations, and athletics
- Major field of study

- Period of attendance in school

Any parent/guardian or eligible student may prohibit the release of any or all of the above information by delivering a written objection to the building principal within 30 days of the date of this notice.

6. **The right contained in this statement: No person may condition the granting or withholding of any right, privilege or benefits or make as a condition of employment, credit, or insurance the securing by any individual of any information from a student's temporary record which such individual may obtain through the exercise of any right secured under State law.**

7. **The right to file a complaint with the U.S. Department of Education concerning alleged failures by the District to comply with the requirements of FERPA.**

The name and address of the Office that administers FERPA is:

U.S. Department of Education
Student Privacy Policy Office
400 Maryland Avenue, SW
Washington DC 20202-8520

Student Biometric Information

Before collecting biometric information from students, the school must seek the permission of the student's parent/guardian or the student, if over the age of 18. Biometric information means information that is collected from students based on their unique characters, such as a fingerprint, voice recognition or retinal scan.

PARENTAL RIGHT NOTIFICATIONS

Standardized Testing

Students and parents/guardians should be aware that the State and District require students to take certain standardized tests, including the following:

- MAP
- IAR
- ISA
- KIDS Assessment

Parents/Guardians are encouraged to cooperate in preparing students for the standardized testing, because the quality of the education the school can provide is partially dependent upon the school's ability to continue to prove its success in the state's standardized tests. Parents/Guardians can assist their students achieve their best performance by doing the following:

1. Encourage students to work hard and study throughout the year;
2. Ensure students get a good night's sleep the night before exams;
3. Ensure students eat well the morning of the exam, particularly ensuring they eat sufficient protein;
4. Remind students and emphasize the importance of good performance on standardized testing;
5. Ensure students are on time and prepared for tests, with appropriate materials;
6. Teach students the importance of honesty and ethics during the performance of these and other tests;

7. Encourage students to relax on testing day.

Homeless Child's Right to Education

When a child loses permanent housing and becomes a homeless person as defined at law, or when a homeless child changes his or her temporary living arrangements, the parent or guardian of the homeless child has the option of either:

- (1) continuing the child's education in the school of origin for as long as the child remains homeless or, if the child becomes permanently housed, until the end of the academic year during which the housing is acquired; or
- (2) enrolling the child in any school that non-homeless students who live in the attendance area in which the child or youth is actually living are eligible to attend.

Assistance and support for homeless families include United Way of Lake County. Contact them at 211LakeCounty.org, call 2-1-1, or text your zip code to 898211.

Family Life & Sex Education Instruction

Students will not be required to take or participate in any class or courses in comprehensive sex education, including in grades 6-12, instruction on both abstinence and contraception for the prevention of pregnancy and sexually transmitted diseases, including HIV/AIDS; family life instruction, including in grades 6-12, instruction on the prevention, transmission, and spread of AIDS; instruction on diseases; recognizing and avoiding sexual abuse; or instruction on donor programs for organ/tissue, blood donor, and transplantation, if his or her parent or guardian submits a written objection. The parent or guardian's decision will not be the reason for any student discipline, including suspension or expulsion. Nothing in this Section prohibits instruction in sanitation, hygiene or traditional courses in biology.

Parents or guardians may examine the instructional materials to be used in any district sex education class or course.

Multilingual Learners

The school offers opportunities for resident Multilingual Learners to achieve at high levels in academic subjects and to meet the same challenging State standards that all children are expected to meet.

Parents/guardians of Multilingual Learners will be informed how they can:

- (1) be involved in the education of their children;
- (2) be active participants in assisting their children to attain Multilingual proficiency, achieve at high levels within a well-rounded education, and meet the challenging State academic standards expected of all students; and
- (3) participate and serve on the District's Transitional Bilingual Education Programs Parent Advisory Committee.

For questions related to this program or to express input in the school's Multilingual Learners program, contact Carol Bennett at (cbennett@gavin37.org).

School Visitation Rights

The School Visitation Rights Act ([Visitation Rights](#)) permits employed parents/guardians, who are unable to meet with educators because of a work conflict, the right to time off from work under

certain conditions to attend necessary school functions such as parent-teacher conferences, academic meetings and behavioral meetings. Letters verifying participation in this program are available from the school office upon request.

Pesticide Application Notice

The district maintains a registry of parents/guardians of students who have registered to receive written or telephone notification prior to the application of pesticides to school grounds. To be added to the list, please contact Cheri Coby (ccoby@gavin37.org).

Mandated Reporters

All school personnel, including teachers and administrators, are required by law to immediately report any and all suspected cases of child abuse or neglect to the Illinois Department of Children and Family Services.

Unsafe School Choice Option

The unsafe school choice option provided in State law permits students to transfer to another school within the District in certain situations. This transfer option is unavailable in this District because each grade is in only one attendance center. A student, who would otherwise have qualified for the choice option, or the student's parent/guardian, may request special accommodations from the building principal.

Student Privacy

The District has adopted and uses several policies and procedures regarding student privacy, parental access to information and administration of certain physical examinations to students. These policies are available at https://boardpolicyonline.com/?b=gavin_37.

Sex Offender Notification Law

State law prohibits a convicted child sex offender from being present on school property when children under the age of 18 are present, except for in the following circumstances as they relate to the individual's child(ren):

1. To attend a conference at the school with school personnel to discuss the progress of their child.
2. To participate in a conference in which evaluation and placement decisions may be made with respect to their child's special education services.
3. To attend conferences to discuss issues concerning their child such as retention or promotion.

In all other cases, convicted child sex offenders are prohibited from being present on school property unless they obtain written permission from the superintendent or school board.

Anytime that a convicted child sex offender is present on school property – including the three reasons above - he/she is responsible for notifying the principal's office upon arrival on school property and upon departure from school property. It is the responsibility of the convicted child sex offender to remain under the direct supervision of a school official at all times he/she is in the presence or vicinity of children.

A violation of this law is a Class 4 felony.

Information about sex offenders or violent offenders against youth is available to the public on the Illinois State Police (ISP) website. The ISP website contains the following:

Illinois Sex Offender Registry, <https://isp.illinois.gov/Sor>

Illinois Murderer and Violent Offender Against Youth Registry, <https://isp.illinois.gov/MVOAY>

Frequently Asked Questions Concerning Sex Offenders, <https://isp.illinois.gov/Sor/FAQs>

Parent Notices Required by the Every Student Succeeds Act (ESSA)

I. Teacher Qualifications

A parent/guardian may request, and the District will provide in a timely manner, the professional qualifications of your student's classroom teachers, including, at a minimum, whether:

- a. The teacher has met the State qualifications and licensing criteria for the grade levels and subject areas in which the teacher provides instruction.
- b. The teacher is teaching under emergency or other provisional status.
- c. The teacher is teaching in the field of discipline of the certification of the teacher.
- d. Paraprofessionals provide services to the student and, if so, their qualifications.

II. Testing Transparency

The State and District requires students to take certain standardized tests. For additional information, see handbook procedure "Standardized Testing".

A parent/guardian may request, and the District will provide in a timely manner, information regarding student participation in any assessments mandated by law or District policy, which shall include information on any applicable right you may have to opt your student out of such assessment.

III. Annual Report Card

Each year, the District is required to disseminate an annual report card that includes information on the District as a whole and each school served by the District, with aggregate and disaggregated information for each required subgroup of students including: student achievement on academic assessments (designated by category), graduation rates, district performance, teacher qualifications, and certain other information required by federal law. When available, this information will be placed on the District's website (www.gavin37.org).

IV. Unsafe School Choice Option

The unsafe school choice option allows students to transfer to another District school or to a public charter school within the District under certain circumstances. For additional information, see handbook procedure "Unsafe School Choice Option".

V. Student Privacy

Students have certain privacy protections under federal law. For additional information, see handbook procedure "Student Privacy".

VI. Multilingual Learners

The school offers opportunities for resident Multilingual Learners to achieve at high levels in academic subjects and to meet the same challenging State standards that all children are expected to meet. For additional information, see handbook procedure "Multilingual Learners".

VII. Homeless Students

For information on supports and services available to homeless students, see handbook procedure "Homeless Child's Right to Education".

For further information on any of the above matters, please contact the building principal.

DISTRICT 37 1:1 LEARNING ENVIRONMENT

Introduction

District 37's mission is to engage, grow and empower every learner, every day. That mission guides every step of the District's move to a 1:1 transformative learning environment, where every student has a device that allows him or her to collaborate with peers and teachers, and connect to a world of learning in and out of the classroom. In our District, we believe that all students can learn and achieve to their highest ability, and a 1:1 environment will support this belief.

This transformative environment brings with it great opportunities for teaching and learning, requires communication between schools and families, and places responsibility on students for the responsible use and care of the device.

This section provides valuable information for families and outlines the expectations of all stakeholders in a 1:1 environment: students, teachers and staff, and parents/guardians.

Questions?

If you have questions about District 37's 1:1 transformative learning environment, any information in this document, or the user agreement, please contact Director of Technology, David Roat (droat@gavin37.org) or Scott Schwartz, Superintendent (sschwartz@gavin37.org).

Device Distribution & Collection

Distribution: Devices will be distributed during the first week of the school year. Students who transfer into District 37 will receive their device within their first week in attendance.

Collection: All devices will be collected at the end of the school year with all accessories originally provided. Accessories include: a power adaptor/charger (HP Probook) and case and/or bag, if provided.

If a student fails to turn in the device or any of the accessories, the family will be charged the full replacement cost for the device and its accessories.

Any student who leaves District 37 during the school year must turn in the school-issued device and accessories prior to the last day of attendance. Again, the family will be charged the full replacement cost for the device and its accessories if the device isn't returned.

Any charger or bag/case lost, damaged, or not returned at the end of the school year will result in a replacement charge to the family.

Using the Device at School

Students are expected to bring their fully charged device to school every day and bring their device to all classes unless they are advised differently by a particular teacher. If a student does not bring the device to school:

- He or she may ask their classroom teacher if there is a loaner available. If the teacher does not have a loaner available, the student can check with the front office.
- The student maintains responsibility for the device as if it were their own for the school day.

- The student must return the teacher's device to the classroom teacher at the end of the school day. If a student checks out a loaner from the front office, he or she can take the device home at the end of the school day until their original device is returned to them, at which point the student will return their loaner device to the front office.

Charging Devices: Many classrooms have limited charging capabilities. Once the battery is completely depleted, the devices take a few minutes to recharge. Therefore, all devices are expected to be brought to school fully charged.

Backgrounds and Themes: Inappropriate media may not be used as a background for any device. The presence of such media will result in disciplinary action per policy and procedures (Board Policy 6:235).

Sound: The sound of any devices are expected to be on mute at all times unless permission is given by a teacher. It is recommended that all students have a pair of earbuds or headphones with them at school at all times to be used at the discretion of the teacher.

Printing: HP Probooks do not easily support printing. When printing is necessary, students can email their teacher who can print on their behalf.

Using the Device Outside of School

Students are expected to use their school-issued device on school-related assignments. They are bound by the Gavin Public Schools Acceptable Use Policy, 1:1 User Agreement, and general behavior guidelines, whenever they use their device outside of school. Note: some devices may be left in the classroom per individual teacher.

Care and Maintenance

General Care:

- Keep food and drinks away from the device.
- Devices should remain free of all stickers, embellishments, and decals not already on the device.
- Insert and remove charge cords and earbuds from the device with care to prevent damage.
- Students are responsible for keeping the device's battery charged for daily school use. Note: some devices will be charged in the classroom.
- Students must honor and abide by all District 37 policies, procedures, rules, and guidelines.

Screen Care

- Keep screens away from any rough or sharp objects that can scratch or crack the screen.
- Do not place heavy objects on top of the device; doing so could damage the screen.
- Clean the screen with a soft, dry cloth or anti-static cloth only. Liquid type cleaners such as Windex should be avoided at all times.

Transporting the Device

- Devices must remain in the school-issued case at all times.
- When placing devices in backpacks, use extreme care so as not to put any unnecessary pressure on the device.

- Prevent heavy items in the backpack from being placed against or on top of the devices. When moving around the classroom or at home with a Probook, the student should close the device and carry it with both hands.

Device Identification

The District will maintain a log of all devices that includes a serial number. Each device case will be given a label with the student's name and school/grade level information. Do not remove this label at any time!

No Expectation of Privacy

Students have no expectation of privacy in any material that is stored, transmitted, or received via the District's electronic network, school-issued device, or school/district-provided subscription services. Electronic communications, documents, files, and downloaded material are monitored and can be read by school officials at any time.

Repairs/Replacement

- Students or anyone outside of school should never try to repair a device on their own, as this could void any warranty on the devices.
- Students will take their damaged device to the front office; the administrative assistant will assist on behalf of the student.
- If the device requires a repair, a loaner device will be issued to the student if one is available.
- If the student is issued a loaner device, the device may be taken home.
- When a device has been repaired, the student will be contacted to pick up their repaired Probook and return their loaner device.
- Families will be charged a replacement fee if the students demonstrate an abuse of their 1:1 device. Parents/guardians will be notified of the need for repair or replacement by a building administrator and the appropriate fee will be applied to the Family Access account.
- All accessories, in addition to the device, must be returned at the end of the year. A replacement fee will be charged if not returned.
- The District will not make cosmetic repairs to devices.
- The District will not cover the loss or damage of device accessories.

Content Filter

The District utilizes Internet content filters that are in compliance with the federally mandated Children's Internet Protection Act (CIPA) and all other required federal and state mandates and statutes. All school-devices, regardless of physical location (in or out of school), will have all Internet activity protected and monitored by the District. If a website is blocked in school, then it will be blocked out of school. If an educationally valuable site is blocked, students should contact their teachers who can request that the site be unblocked ("whitelisted" in support of our educational mission).

Google Workspace for Education Notice to Parents/Guardians

This notice describes the personal information we provide to Google for these accounts and how Google collects, uses, and discloses personal information from students in connection with these accounts.

Using their Google Workspace for Education accounts, students may access and use the “Core Services” (i.e. Google Docs, Google Sheets, Google Slides, Gmail, Google Classroom) offered by Google. In addition, we also allow students to access certain other Google services with their Google Workspace for Education accounts. Specifically, your child may have access to appropriate “Additional Services” (YouTube, Blogger, Maps).

Google provides information about the information it collects, as well as how it uses and discloses the information it collects from Google Workspace for Education accounts in its Google Workspace for Education Privacy Notice. You should review this information in its entirety.

Digital Citizenship

School-issued devices should be used for educational purposes. Students are to adhere to the Authorization for Electronic Network Access, which every family signs upon entering District 37. Students will adhere and agree to the following:

- *Respect yourself.* I will show respect for myself through my actions. I will select online names that are appropriate. I will use caution with the information, images, and other media that I post and view online. I will carefully consider what personal information I post.
- *Respect others.* I will show respect for others. I will not use electronic mediums to antagonize or bully others. Protect yourself. I will ensure that the information, images, and materials I post online will not put me at risk. I will not publish my personal details, contact details, or a schedule of my activities. I will report any attacks or inappropriate behavior directed at me while online. I will protect my passwords, accounts, and resources.
- *Protect others.* I will protect others by reporting abuse and not forwarding inappropriate materials or communications.

Apps, Websites & Other Tools

District 37 maintains a list of all of the apps and third-party web applications that teachers and staff may use to engage students in the District 1:1 environment. Resources are vetted for age-appropriate educational value, as well as safety and security. Any app, subscription, or website that requires the district to provide student information will be HIPPA, COPPA, and SOPPA compliant to maintain student privacy. A list of the approved resources can be found at <https://www.gavin37.org/domain/1119>. Teachers may share resources specific to their classrooms with parents/guardians throughout the school year.

2025-2026 Student & Parent/Guardian Handbook Acknowledgement

I acknowledge receiving and/or being provided electronic access to the Gavin School District 37 Student and Parent/Guardian Handbook, or have reviewed a printed copy (available from my child's school or the District Office). I have read the handbook and understand all the rules and expectations, including rules and responsibilities related to 1:1 devices. I agree to be responsible for following all of the rules and expectations of the school and understand the consequences of failing to follow the requirements.

I understand that the Student and Parent/Guardian Handbook and School District policies may be amended during the year without notice. This handbook in the latest version is applicable to all students upon the implementation of any change. The administration will notify all parents and students, where possible, of any changes to the handbook as soon as is practicable.

I understand that my failure to confirm receipt of this acknowledgment will not relieve me or my child from being responsible for knowing or complying with School and School District rules, policies and procedures.

Please confirm that you have received this handbook and reviewed it with your child(ren). By signing below, I indicate that I have read the Student and Parent/Guardian Handbook with my child. The Gavin Public Schools District 37 has provided my child with a 1:1 technology device and I certify that such device is necessary for my child to adequately participate in remote learning and/or complete internet-based homework assignments. He or she agrees to abide by all rules of District 37 and applicable laws that relate to the use of his or her 1:1 device. Parents/Guardians must complete this step for each of their children; the agreement must be completed in order for students to keep and use their 1:1 device.

Parent/Guardian Signature

Date

Student Signature

Date

ACCESS TO ELECTRONIC NETWORK AUTHORIZATION FORM

Print/Remove this page and return to school.

I have read and understand the above section “Access to Electronic Networks” in the student handbook and Board of Education Policy No. 6:235 (Access to Electronic Networks) and I will abide by the terms outlined therein. I further understand that should I commit any violation, my access privileges may be revoked, and school disciplinary action and/or appropriate legal action may be taken. In consideration for using the District’s electronic network and having access to public networks, I hereby release the School District and its Board members, employees, and agents from any claims and damages arising from my use, or inability to use the Internet.

Date: _____

User Name _____

User Signature _____

Required if the user is a student

I have read and understand the above section “Access to Electronic Networks” in the student handbook and Board of Education Policy No. 6:235 (Access to Electronic Networks). I understand that access is designed for educational purposes and that the District has taken precautions to eliminate controversial material. However, I also recognize it is impossible for the District to restrict access to all controversial and inappropriate materials. I will hold harmless the District, its employees, agents, or Board members, for any harm caused by materials or software obtained via the network. I accept full responsibility for supervision if and when my child’s use is not in a school setting. I have discussed the terms of the above-mentioned student handbook section and Board Policy 6:235 with my child. I hereby request that my child be allowed access to the District’s electronic network.

Date: _____

Parent/Guardian Name _____

Please Print

Signature _____

PERMISSION FOR STUDENT TO WALK OR RIDE BICYCLE TO SCHOOL
IN LIEU OF DISTRICT-PROVIDED BUS TRANSPORTATION

Student Name: _____

School: _____ Grade: _____

As the parents/guardians of Gavin School District 37 are aware, the District's schools are both situated on major thoroughfares – Central Elementary School is at the intersection of Ridge and Route 59 and South Middle School is situated on Highway 134, both of which present serious hazards to the safety of our students. For this reason, the District provides bus transportation for all Gavin students, regardless of where they live in proximity to their school, though some parents/guardians choose to transport their students on their own or via other family members or trusted adults.

If a parent/guardian chooses to allow their student to walk or ride their bicycle to school, however, they are required to complete this Permission form and return it to their student's building principal.

As parent/guardian of _____, I give this following permission(s) for my child for the 2025-2026 school year (check one or both):

_____ My child may walk to and from school.

_____ My child may ride their bicycle to and from school.

I understand and acknowledge that there are inherent risks and dangers associated with allowing my child to walk and/or ride their bicycle to and from the Gavin District 37 schools in light of where they are situated, and I understand and acknowledge that District-provided transportation is available to my child to avoid these inherent risks and dangers. To the fullest extent allowed by law, I knowingly and voluntarily accept and assume the risks/dangers of and responsibility for such risks/dangers that could arise out of or occur in the course of my child walking and/or riding their bicycle to and from school.

I further release, waive, and discharge Gavin School District 37 and its Board members, employees, agents, and representatives from any liability resulting from all personal injuries and/or loss of property arising from, or occurring in the course of, my child walking and/or riding their bicycle to and from school, and any related claims, losses, expenses, damages, and/or costs, except to the extent caused by the intentional or willful and wanton conduct of Gavin School District 37 or its Board members, employees, agents, and/or representatives.

Parent/Guardian Signature

Date

Parent/Guardian Printed Name

Telephone Number

NOTE: Permission will *not* be granted if not provided or parent/guardian cannot be reached to confirm permission to walk and/or ride their bicycle to school. Telephone confirmation will be confirmed by the building principal in writing.

Parent/guardian permissions for this student confirmed by phone on _____.

Building Principal Signature